

Shaping the future workplace



Atos

Today's workplace is evolving rapidly. New ways of working have emerged, powered by AI, digital technologies, and shifting priorities.

More **intelligent, inclusive, and sustainable digital workplaces** are redefining how people work, connect, and thrive. AI-powered tools and data-driven insights are transforming operations — enabling smarter decisions, seamless collaboration and personalized experience at scale.

Now accelerate your digital workplace ambitions and take the user experience to the next level by **empowering your teams and unleashing their full potential**.

Let's work together to shape the future workplace, where AI-powered technology propels better work, more connections, and sustainable impact.



60%

of employees prefer **flexible hybrid working** arrangements ([Gallup](#))



23%

higher profitability for organisations in the top 1/4 of **employee engagement** ([Gallup](#))



70%

of Gen-Z, Millennials consider **Environmental Sustainability** important in choosing employers. ([Deloitte](#))



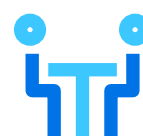
80%

of digital workplace management tools will include **generative AI capabilities** by 2026. ([Gartner](#))



79%

of employees believe that within 2 years, **Gen-AI will change 30% of their work**. ([Deloitte](#))



15%

of day-to-day work decisions will be made autonomously via **Agentic AI** by 2028, **up from 0% in 2024** ([Gartner](#))

“ The digital workplace is evolving amid rising investment in AI, the new emphasis on digital employee experience and changing demands on IT. This roadmap outlines the technology, talent and process changes that digital workplace leaders must address as they build their five-year strategy. ”

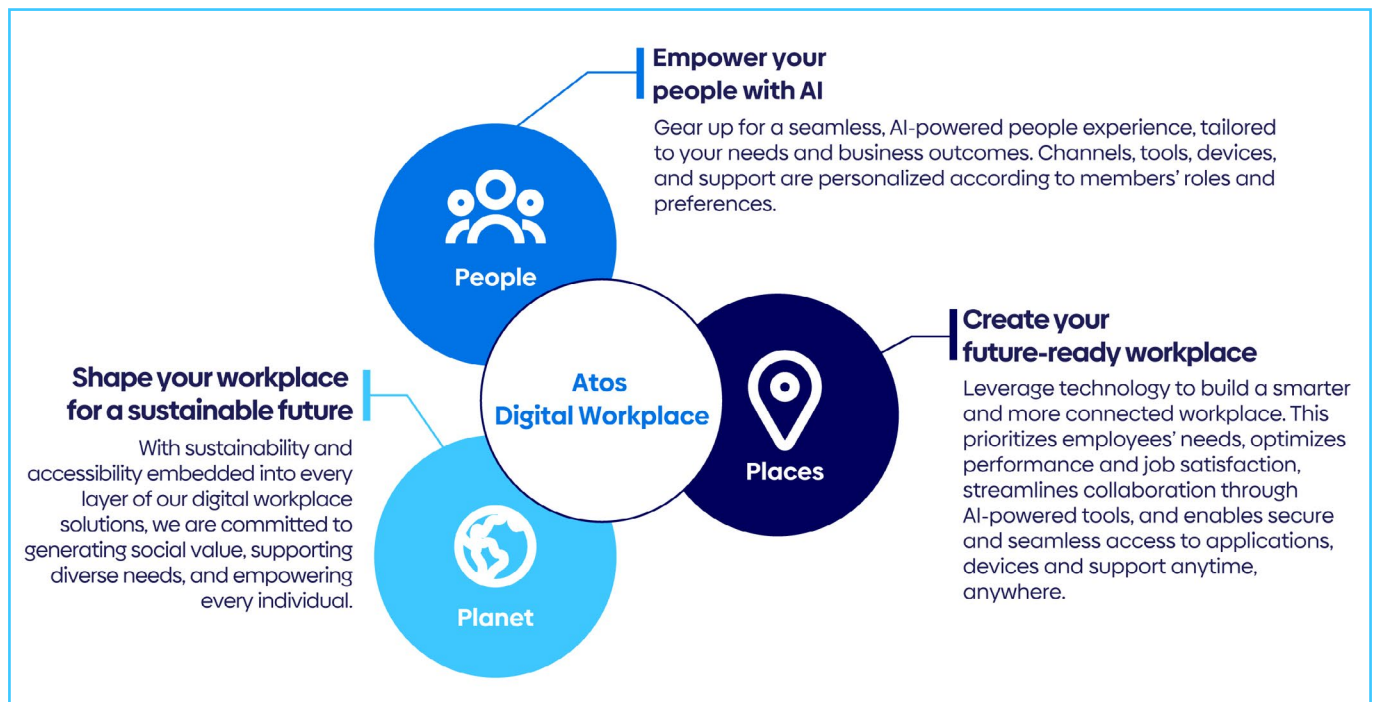
Taking the User Experience to the Next Level

Wherever your workplace and whatever your business, we'll help you unlock new possibilities in how your teams work, connect and thrive.

Here's how.

We provide end-to-end digital workplace services powered by AI tools and advanced technology platforms. We deliver secure, adaptive environments that unlock your business growth, resilience, and long-term impact. Armed with AI-driven insights and data-powered experiences, we accelerate transformation and build the next generation of smart, sustainable enterprises.

Our approach is focused on making an impact in three key areas: people, places and the planet.



Unlocking a Future-ready Digital Workplace

Transform your employee experience, enable new ways of working and deliver measurable business results with Atos.

Our comprehensive solutions empower your teams with seamless, AI-powered tools and personalized support, enriching every member experience, boosting business performance and enhancing team engagement.



Digital Workplace advisory

Get strategic advice and guidance to help navigate your organisation through a comprehensive transformation of its workplace



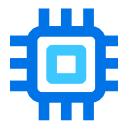
Engaged Employee Experience

Enhance your workplace efficiency, user experience and employee performance, using real-time data aggregation, AI-driven insights, proactive issue detection and resolution.



Accessibility

Create an accessible and inclusive workplace for everyone by leveraging world-leading expertise and solutions in accessibility advisory, testing, and 'Accessibility as a Service'.



Intelligent Care Center

Ensure your employees enjoy secure, seamless device support through advanced automation, cognitive analytics, virtual agents, remote diagnostics, innovative device provisioning, and robust asset tracking.



Intelligent Collaboration

Unleash the power of your teams with enterprise collaboration platforms and integrated AI-powered built for today's hybrid workplace.



Digital Workplace Platforms

Redefine your workplace with modern management and flexible ways of working, supported by our expertise across the entire workplace IT service chain - from consulting, design, and build to operation and maintenance.



Top 6 Trends Shaping the Future of Workplaces

Personalization: The new norm

In today's fast-paced digital landscape, one-size-fits-all no longer works. Companies need to foster a more personalized employee experience, tailored to unique user needs, behaviors and context.

By leveraging dynamic personas, conversational support, and simplified user journeys, our [digital workplace solutions](#) make everyday tasks easier and more intuitive. Combined with guided change and adoption, our approach ensures technology works for your people – not the other way around.

The rise of always-on, real-time experience

The future lies in proactively managing real-time experiences through data-driven automation, aiming to optimize end-user interactions across diverse devices and applications.

At [Atos' Experience Operations Center \(XOC\)](#), we enhance workplace efficiency through real-time data aggregation, AI-driven insights, and proactive issue detection and resolution. These are instrumental in monitoring operational performance and driving a unique user experience.

AI-Powered tools : A game changer for your employee experience

The integration of AI, Gen-AI and Agentic AI is increasing and revolutionizing workplaces.

We leverage Gen-AI to develop comprehensive solutions, offer personalized services, and establish best practices for human-AI collaboration to improve your business performance and employee experience.

Atos is at the forefront of the [Agentic AI](#) transformation, offering cutting-edge solutions to enhance IT support and provide a seamless yet different delivery experience, helping you transition from reactive to proactive problem solving, augmenting human expertise in an increasingly automated and data-driven landscape.

Powering the Smart Workplace with compliance and embedded security

With growing demand for mobility and communication platforms, organizations need to focus on secure and compliant workplace systems.

We deliver end-to-end workplace [security and regulatory compliance](#) to protect your people, your data and your assets, and offer intuitive, secure and instant access to data and applications from any device. This includes detection, prevention, investigation, and response to sophisticated attacks.

Sustainability – A priority embedded in your business growth plans

Sustainability is now a critical part of every company's effort to achieve carbon neutrality by transforming workplace services to promote sustainable practices. Our world-leading [sustainability solutions](#) are designed to help you minimize your carbon footprint and promote environmental sustainability throughout product lifecycles and across your supply chain.

Building a workplace where everyone can thrive

Accessibility and inclusion are not just assistive tools, they are about empowering every employee to contribute their best, regardless of ability. With the right expertise, technology, and training, you can unlock the full potential of your workforce.

We deliver [enterprise-wide accessibility solutions](#) that help you meet legal requirements, uphold your values, and drive real performance.

Shaping Your New Digital Workplace Together

Atos is a global digital transformation leader with an unparalleled perspective and solution offering to design and orchestrate every stage of your digital workplace transformation. Our technological-agnostic approach paves the way for us to collaborate with you and our partners to deliver solutions that work best for your business.

Start your journey with us!



Design a **whole-person, persona-led approach** to building your digital workplace, enabling to unleash your people potential.



Integrate **AI-powered technologies** seamlessly, with **people at the heart**.



Harness and **manage information, knowledge and intelligence** to generate business value.



Design **robust governance** to manage risk and simply your technology landscape.



Deliver **communication, training and coaching** on how to get the most from digital channels and tools.

Leveraging the Power of our Proven Partner Ecosystem



Microsoft

DELL Technologies

servicenow

nexthink

Espressive

Medallia



pulse

Google

citrix

qualtrics^{XM}

intel

xerox

jamf

kore.ai



circular computing

readyworks

NICE inContact CXone

buzzeasy
an Mtech company

Atos Digital Workplace – Leading the Future of Work

Leader

in Outsourced Digital
Workplace

7,500+

Experts in Digital
Workplace Operations

130

countries

Gartner

Leader in Outsourced Digital
Workplace Services (2016-2025)

***ISG**

Leader UK & US Digital Services
Desk & Workplace Support
Services, Employee Experience
Transformation Services

NelsonHall
TRANSFORM THROUGH INSIGHT

Leader Advanced Digital
Workplace Services

 **Everest Group**
From insight to action.

Leader Europe
Workplace Services

AVASANT

Invator Digital
Workplace Services

100+

languages

130M

user engagement

5.2M

managed user devices

Shape your future workplace. Get started today.

Atos' AI-powered, employee-centric Digital Workplace solutions are transforming how organizations work and deliver their products and services, simply by unleashing the potential of their people.

Discover [Atos' Digital Workplace offerings](#) and how you can make a difference in your office environment :
[Digital Workplace - Atos.](#)

[Contact us](#) to explore how you can harness these solutions for a more team-focused approach and sustainable business growth.

About Atos

Atos Group is a global leader in digital transformation with c. 72,000 employees and annual revenue of c. € 10 billion, operating in 68 countries under two brands – Atos for services and Eviden for products. European number one in cybersecurity, cloud and high-performance computing. Atos Group is committed to a secure and decarbonized future and provides tailored AI-powered, end-to-end solutions for all industries. Atos is a SE (Societas Europaea) and listed on Euronext Paris.

The purpose of Atos is to help design the future of the information space. Its expertise and services support the development of knowledge, education and research in a multicultural approach and contribute to the development of scientific and technological excellence. Across the world, the Group enables its customers and employees, and members of societies at large to live, work and develop sustainably, in a safe and secure information space.

Find out more about us

atos.net

atos.net/career

Let's start a discussion together



Atos is a registered trademark of Atos SE. August 2025. © Copyright 2025, Atos SE. Confidential Information owned by Atos group, to be used by the recipient only. This document, or any part of it, may not be reproduced, copied, circulated and/or distributed nor quoted without prior written approval of Atos.

106735 - JS + JD - Brochure - Atos Digital Workplace (DWP)

Atos