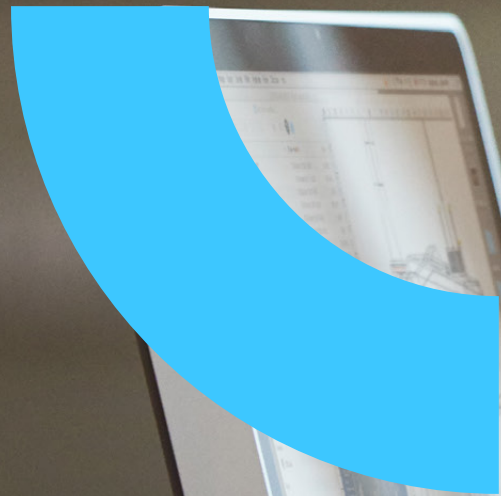


Atos Network Advisory Services

Building a network strategy
aligned with your business goals



Atos

Expert consulting to build, define, and implement your optimal network strategy

Ensuring that your network is properly designed and configured requires considering more than just technology. You need to take into account performance considerations, operational procedures, and security requirements – as well as a long-term vision and strategy. Networks need to have the flexibility to adapt to new requirements, technologies, and complex business and topology changes. Atos Network Advisory Services start by thoroughly assessing the overall landscape from both a business and technical standpoint.

Working on the basis of this detailed assessment, we develop a long-term network strategy tailored to your specific requirements. This strategy is designed to enable effective and efficient operations, optimal configurations, enhanced

processes, and improved overall security and environmental sustainability. We ensure that you achieve the best possible end user experience, fostering a truly productive workforce and seamless back-office operations.

Atos can ensure that your network supports your business goals and delivers the best possible outcomes to your end customers. Our knowledge and expertise are based on decades of experience delivering thousands of enterprise network deployments to companies across the globe. Our best-in-class portfolio of network services and partnerships with leading technology companies ensures impartial, agnostic advice when selecting the right technologies for your long-term network strategy and roadmap.

Whether you are a large, distributed enterprise, a public organization or a mid-size company, we can help meet your requirements.

We have experience delivering the most complex and demanding use cases for modern network technology, like intense high-resolution real-time video streaming, customized IoT device environments, high-demand edge computing, and advanced design solutions including product manufacturing technologies.

Atos has the capabilities, knowledge and experience to help you define and implement the enterprise network strategy you need.



Beginning your journey to network modernization

Your network is crucial for your business



Every business relies on a network that is crucial to its operation. In many cases, the network is not given the recognition or respect that such a critical business platform deserves.

Raising the profile and importance of this key piece of infrastructure is the key to conducting business, because it is the backbone upon which your business relies on. Helping you develop and define the technologies, roadmaps, strategies and operations that are vital to your ongoing success.

Determining where to go next, what choices to make, and how to align and harmonize the IT landscape is often exceedingly difficult due to many complexities, dependencies and the ever-changing technology landscape.

Reducing costs, building and enhancing scalability, improving operations and performance, and creating a better end-user experience are all crucial to drive your business forward. It can be challenging, but the right consulting partner can help you navigate these complexities – confident that you are on the right track to gain a competitive edge.

As the marketplace continues to evolve, our consulting solutions and partner ecosystems adapt as well, making them an indispensable resource for any forward-thinking organization. Our services are technology-agnostic and always focused on the best performance of your business.

Establishing the right approach

Are you looking for up-to-date industry advice from network consulting experts? Do you need help guiding your network advancement and evolution to ensure a risk-free, efficient journey?

With advisory teams that are deeply engaged with your staff throughout the entire process, Atos ensures world-class collaboration from both a business and a technological point of view.

At Atos, our consultants conduct a due diligence assessment to establish your business needs and requirements and to understand your current landscape and any future activities or planned deployments. We examine multiple areas – not just technological aspects but also workflows, processes, people, operations, and end-user performance, among others. We help select the right approach and collaborate with you and your teams to deliver a tailored and successful outcome.

We can assist you at all levels of engagement, everything from initial advisory services to full implementations and future operations. Whether the project is large or small, Atos consultants work with you at the level you need.

Through the discovery, assessment, and reporting phases of the engagement, we ensure you are fully involved in the process. Our goal is to be your trusted partner for the entire journey, enabling you to embrace the next phase of your business growth.


A comprehensive project team addresses your needs

No matter the size or scale of your program, we address your challenges by applying years of experience, a vast program management community along with modern, proven methodologies. We establish a clear program structure and organization designed to govern and deliver the network solution you need.

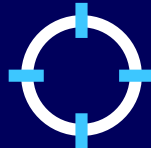
Any network consulting project requires a team consisting of:




The **Advisor** (or Head Consultant), a senior professional with a consulting mindset and the capability to connect, listen, and engage with your teams and leadership.



The **Tech Expert**, who provides specialized in-depth network knowledge to the consulting project.



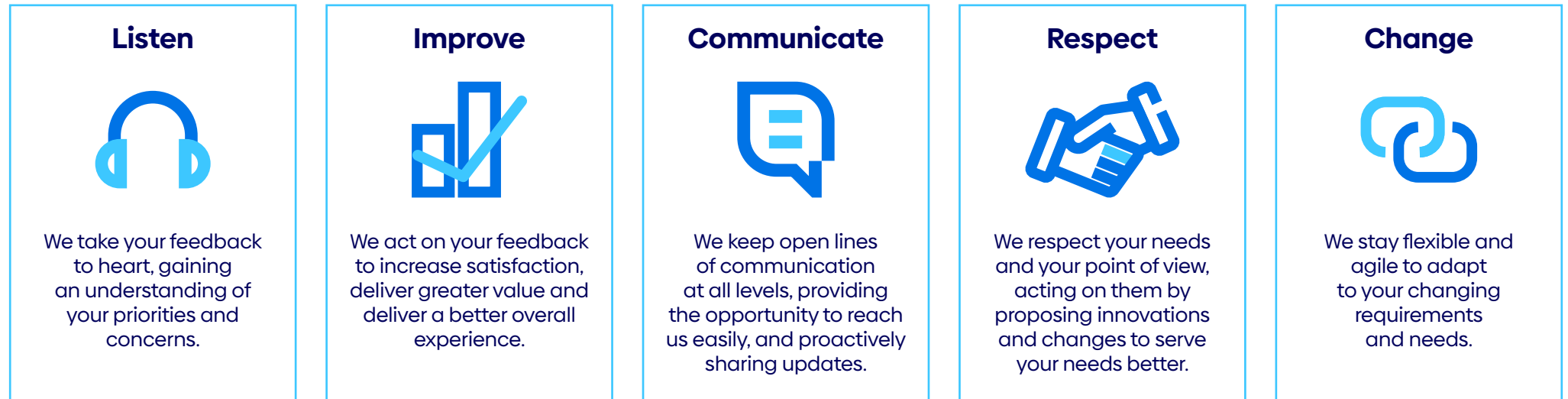
The **Vertical Expert**, who provides knowledge specific to the vertical business scope.



The **Project Manager** (if applicable), who provides knowledge and best practices for project management.

Best practice: CSAT-based continuous improvement

Experience tells us that some projects struggle – not just because of communication issues but also due to missing processes. From the beginning, Atos implements a cycle of continuous improvement by employing a CSAT-based model to regularly collect and assess stakeholder feedback.



The following topics are covered by Atos CSAT surveys for all projects and programs:



Scope

How satisfied are you that the scope for this project is clearly defined?



Cost

How satisfied are you that the project is staying on its agreed budget?



Time

How satisfied are you that the project is being delivered within the agreed-upon timeline?



Communication

How satisfied are you with the overall communication for the project?



Quality

How satisfied are you that the project is meeting its agreed statement of work?

Why Atos?

To quote an old phrase, “we do what it says on the tin” and we take pride in your success. Here’s how we do it:

1. Ensure alignment with your strategy

Our approach is understanding first your business goals and constraints, your priorities and performance requirements, your long-term strategy, and the way technological infrastructure leverages and/or limits your business development.

2. Understand your technological footprint

We begin by analyzing your entire estate under NDA to ensure you receive maximum benefit from our engagement. After identifying the technical KPIs that are relevant to your business, we look at the issues or gaps you are facing in the daily operation. We collect all information about network topology, available devices and software modules running in the infrastructure, the selection of providers, and the difference between your expectations and the real performance of your infrastructure.

3. Strategize

We develop a comprehensive strategic roadmap to elevate and evolve the environment and achieve the defined objectives. This includes creating a defined set of improvements, setting priorities, and planning for necessary changes or upgrades. It involves stakeholder engagement to ensure alignment with business goals and resource allocation.

4. Prepare

We prepare you for the implementation of the strategies developed in the previous phase. This phase involves developing detailed implementation plans, training staff, allocating resources, and setting up monitoring and management processes. It ensures that all necessary preparations are in place for a smooth execution of the new network strategy.

Additionally, we can establish mechanisms for ongoing monitoring and evaluation to ensure the advisory function continues to be effective for years to come.

The blueprint covers the following areas:



Getting started

We are here to ensure that your network investments are aligned with your company strategy and help you achieve your wider business objectives.

Contact us to learn more: atos.net/network-advisory



About Atos

Atos is a global leader in digital transformation with c. 78,000 employees and annual revenue of c. €10 billion. European number one in cybersecurity, cloud and high-performance computing, the Group provides tailored end-to-end solutions for all industries in 68 countries. A pioneer in decarbonization services and products, Atos is committed to a secure and decarbonized digital for its clients. Atos is a SE (Societas Europaea), and listed on Euronext Paris.

The purpose of Atos is to help design the future of the information space. Its expertise and services support the development of knowledge, education and research in a multicultural approach and contribute to the development of scientific and technological excellence. Across the world, the Group enables its customers and employees, and members of societies at large to live, work and develop sustainably, in a safe and secure information space.

Find out more about us

atos.net

atos.net/career

Let's start a discussion together



Atos is a registered trademark of Atos SE. March 2025. © Copyright 2025, Atos SE. Confidential Information owned by Atos group, to be used by the recipient only. This document, or any part of it, may not be reproduced, copied, circulated and/or distributed nor quoted without prior written approval of Atos.

106113 - EM - VK

Atos