



EVIDEN

Lifelink Portfolio 2023

Big Data & Security | Mission Critical Systems Germany
17th May, 2023

© BULL SAS

an Eviden business

Eviden Critical Communication

Eviden offers professional high-availability communication solutions and services for critical infrastructures, for over 15 years, 50+ references, 300+ installations and 150,000 PMR users



Police & Fireman, Army

End-to-end solutions for first responders and special forces
Emergency management



Railways, ports and airports

Securing rail and airport stations maintenance
Passengers' security
Tetra & GSM-R based Communication Solutions



Offshore wind farms

Offshore wind farms security
Maintenance
IoT



Protecting sites or connecting factories

5G Campus Solution
Securing industrial sites
Critical IoT



Smart & Safe cities

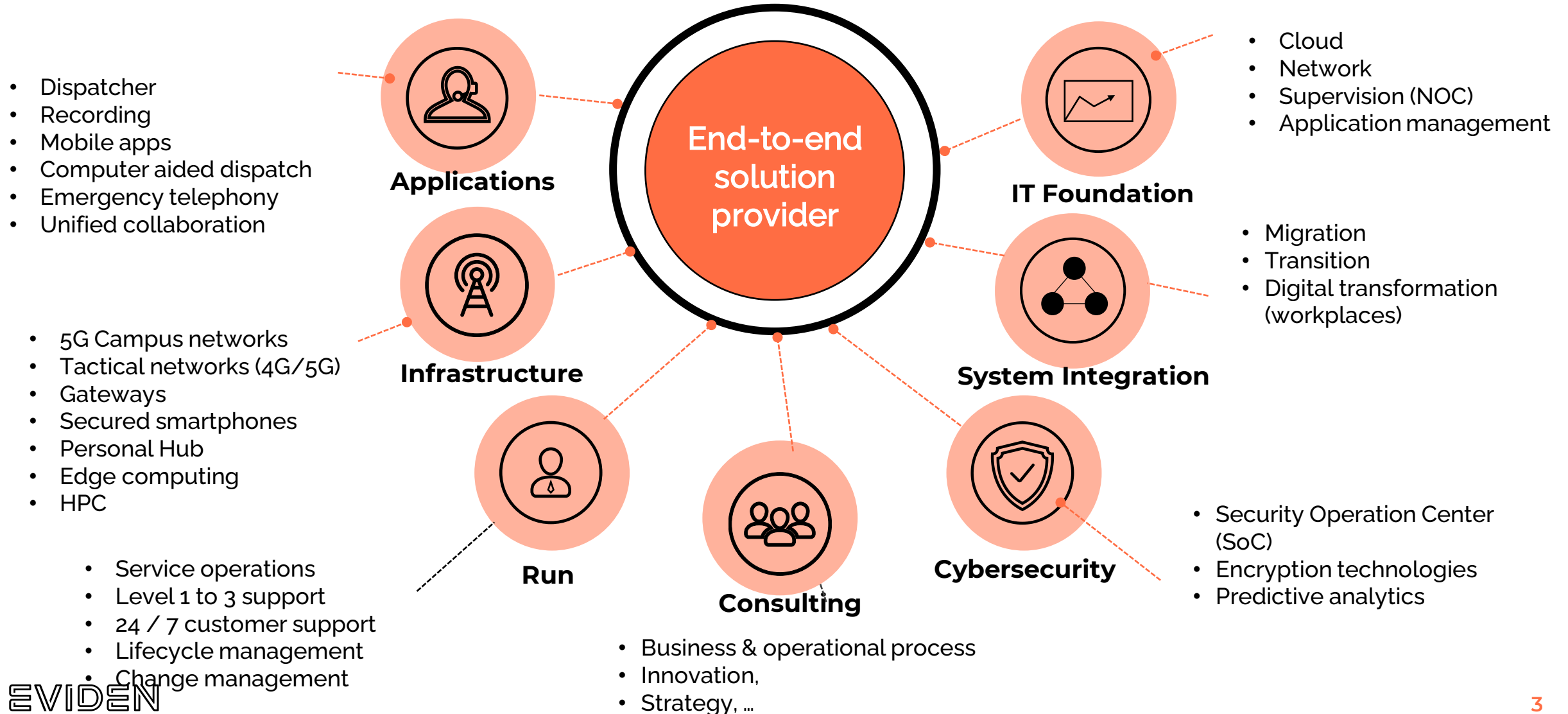
5G Campus Solution
Smart connections for emergency management
IoT connections in the cities
Securing Big Events



Maintenance services

5G Campus Solution
Ensuring critical efficiency of platform and migration
Integration provisioning operation/billing

Eviden Critical Communications Solutions (CCS)



Lifelink Portfolio

Private Networks Tactical Networks



Lifelink Wireless Infrastructure

- A fully integrated Tactical communication system with providing private 4G & 5G networks which can be deployed within minutes
- Supports Broadcast Video & MCPTT using eMBMS
- Network Resiliency (IOPS) feature allows each tactical bubble to function as a fully independent cell with local MCPTT services, or with remote core & central MCPTT services

Direct Mode Operations – D2D



Lifelink Hub

- Direct Mode Operations
- Group Calls event when there is no LTE connectivity
- 2 Channels
- Voice & short messaging only
- Gateway mode between LTE & D2D (roadmap 2023)

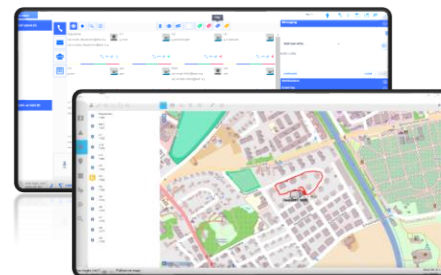
PMR Gateways and Interworking



Lifelink Multinetwork Gateways

- Software & Hardware Gateways providing a variety of interworking between Legacy PMR & LTE / 5G based MCx
- Currently supports: Tetra, Marine & Air VHF, GSM-R

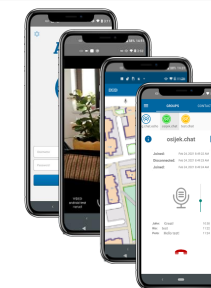
Mission Command and Control



Lifelink Multinetwork Dispatcher & Tracker

- Support for multiple parallel incoming and outgoing calls, open API for integration with third-party command and control systems:
- Geotracking of MCx Client: Geofencing, Multiple layers, replay locations.
- Isolated worker protection
- Audit & worker safety features

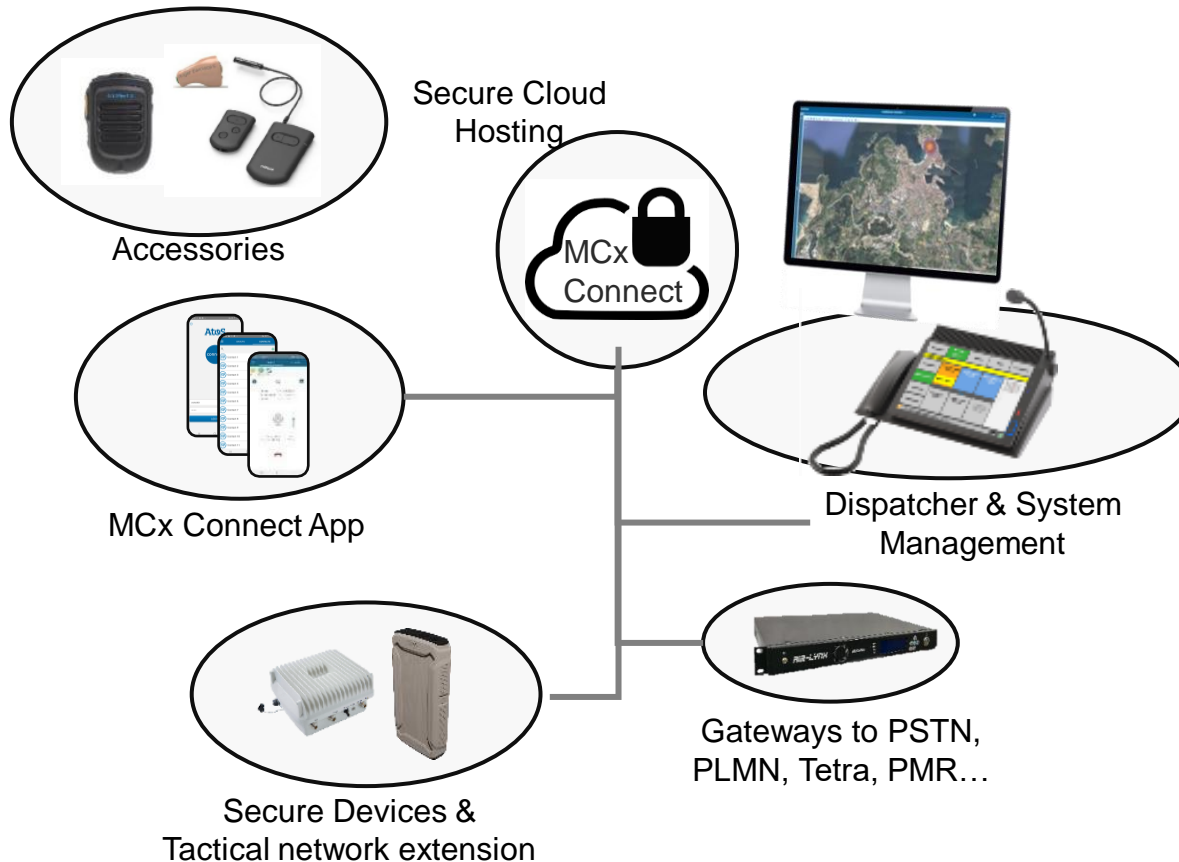
Broadband Mission Critical Communication



Lifelink MCx Connect

- 3GPP compliant Multimedia Communication
- Push to Talk, Video & Multimedia file sharing
- eMBMS support
- Sends enhanced AI enhanced video streams and Alarms to MCx users

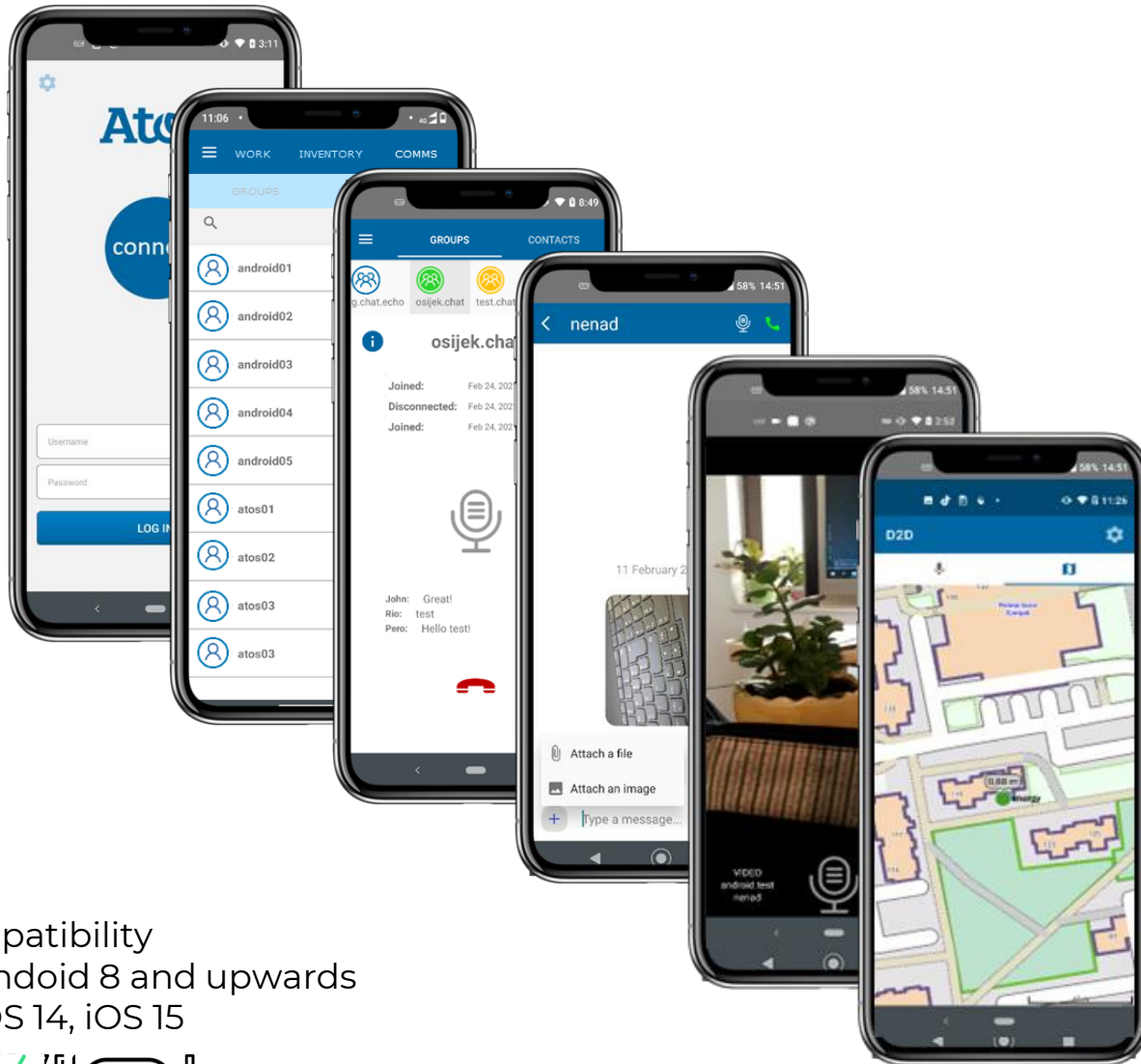
Eviden Lifelink Applications



- Multinetwork-Dispatcher
 - 5G, 4G, Tetra, VHF, 3GPP MCPTT
 - SIP-based
 - GIS
- Voice Recording
 - Networkwide recording based on SIPRec
- MCx Connect
 - 3GPP MCPTT, MCDData, MCVideo
 - Multimedia group communication
 - E2E Secure Communication
 - Location-Based Services
 - Over-The-Air configuration
 - Robust devices
 - Bluetooth integration for remote controlled PTT accessories
- Gateways to PSTN, PLMN, TETRA, Tetrapol

Lifelink MCx Connect

Mission-critical push-to-talk application



Compatibility

- Android 8 and upwards
- iOS 14, iOS 15



6

Key features

3GPP compliant features (ETSI Plugtested)

- Group communications
 - Push To Talk (half duplex group calls)
 - Dynamic group calls
 - Prearranged group calls,
 - MCVideo & MCDData
 - Functional Numbering (FRMCS Ready)
- One to One communications
 - Full duplex calls
 - Video calls
 - Multimedia messaging
- Emergency Notification
- Multimedia Chat & File Transfer

Secure Communication (VPN)

Product Extension Options

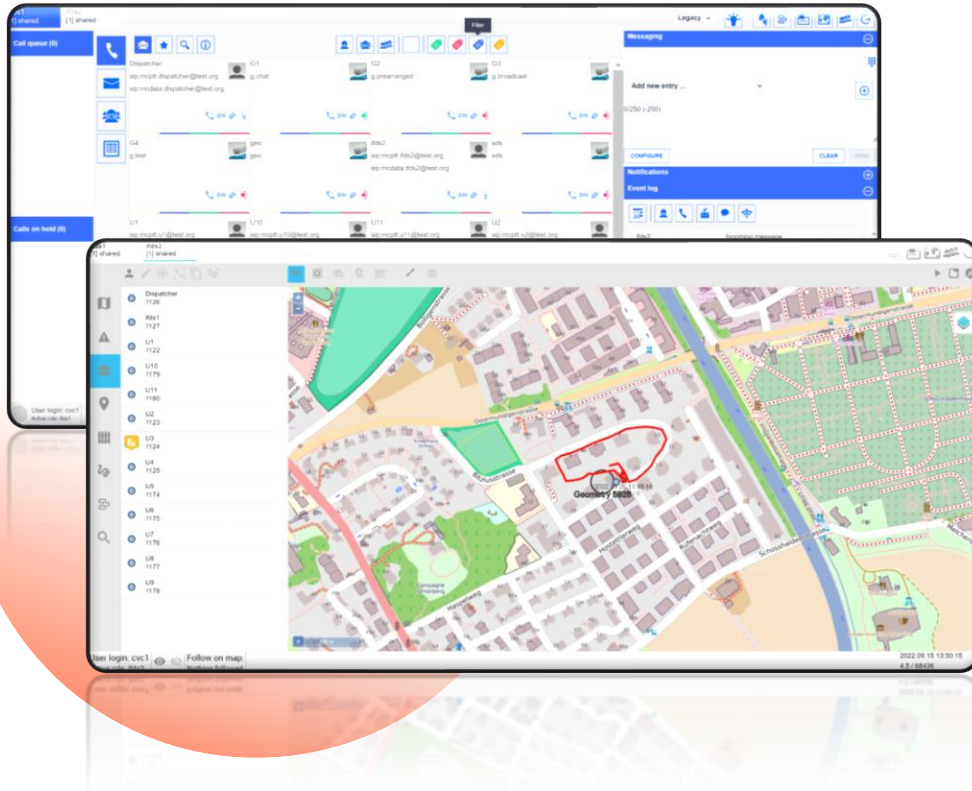
- Dispatcher & Blue Forces Tracking (Geolocation)
- Broadband eMBMS multicast video & voice
- Direct Mode Operations
- Interworking / Gateway to other PMR technologies
- Video Analytics, warnings & alerts



6

Lifelink Multinetwork Dispatcher & Tracker

Integrated Command and control features



- Web based Dispatcher client
 - Advanced dispatching, support for multiple parallel incoming and outgoing calls, open API for integration with third-party command and control systems:
- Web based Geo tracking / Blue force tracking
 - Isolated work protection functions based on location and movement measurements on the device
 - Call routing based on geographic locations. Calls can be dynamically directed to various dispatch stations depending on the user's location.
 - User location tracking and alarms, ensuring the security of end user location. Compare planned and unplanned movements
 - Device status and alarms, monitor the status and availability of the user's equipment (for example, battery status, connection quality, and latency).

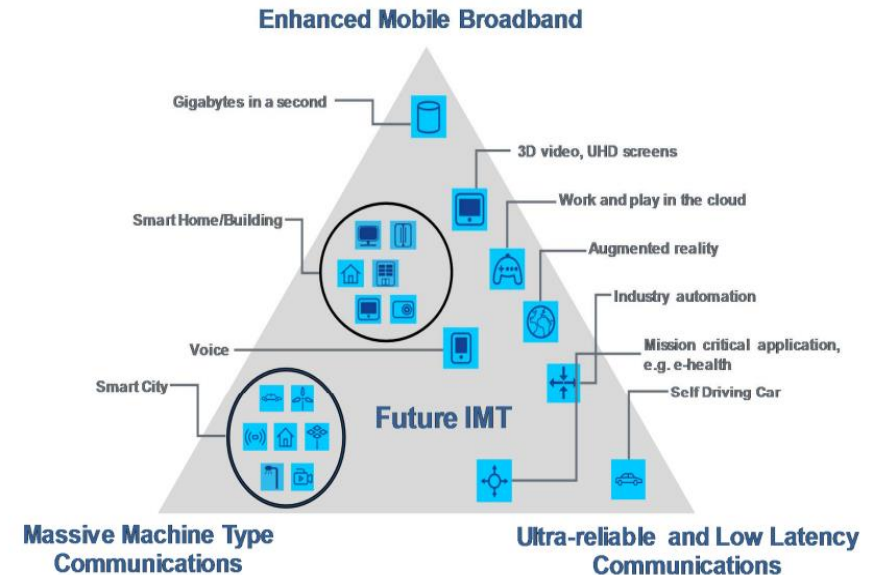
5G Campus Networks in Germany

Bundesnetzagentur (national authority) released 3.7-3.8 GHz spectrum for the industry

- German enterprises can now build up their own private 5G Campus networks to be used e.g. for manufacturing, logistics, depots, airports, ports, etc.
- “Bundesministerium für Wirtschaft und Energie” has published a guideline “Guide 5G campus networks – Guide for small and medium-sized companies”

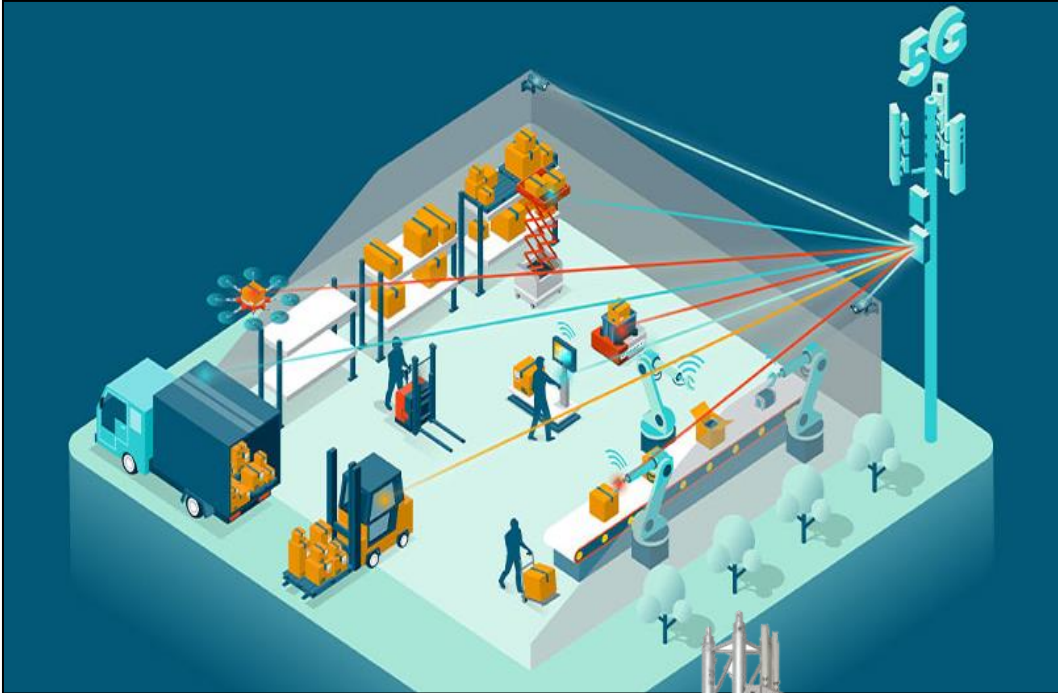


<https://www.bmwi.de/Redaktion/DE/Publikationen/Digitale-Welt/leitfaden-5G-campusnetze-orientierungshilfe-fuer-kleine-und-mittelstaendische-unternehmen.html>



5G usage scenarios

Lifelink 5G for Campus Networks



5G Campus Networks – Added Value



- **High speed** with 5G



- **Low latency** e.g. for real-time communication



- **High quality:** Exclusive licensed frequency guarantees "Quality of Service" and prevents overload



- **High security:** Secure private 5G network owned by the enterprise



- **High flexibility:** 5G can be used for most use cases (data, voice, video, IoT, machines, robots, AGV, drones, etc.)



- **Reduced complexity:** 5G replaces a variety of technologies (e.g. industrial Wi-Fi, Lora, UWB) and replaces expensive cabling



- **High mobility:** Complete network coverage indoors and outdoors and continuous permanent connection to the network (mobility)



- **End to end application:** Eviden offers complete solutions for many applications

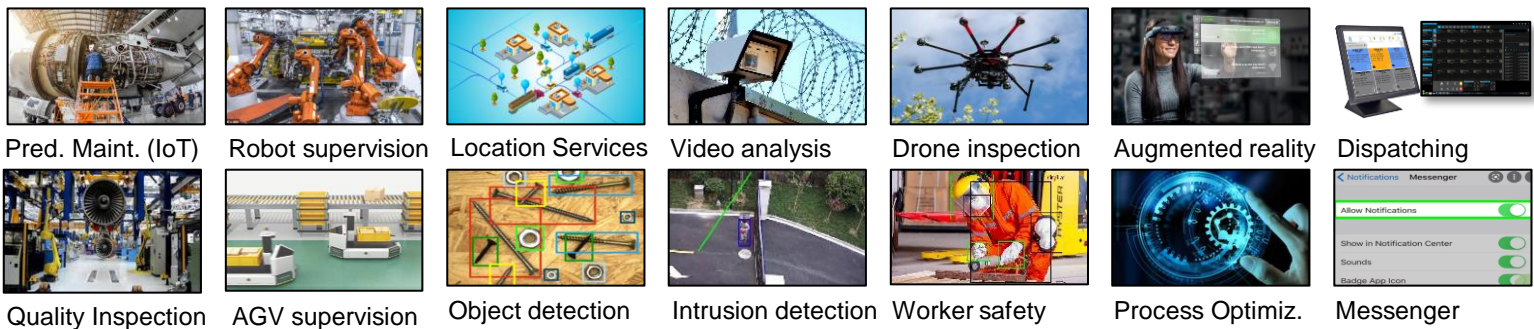


- **Compliant to 3GPP**

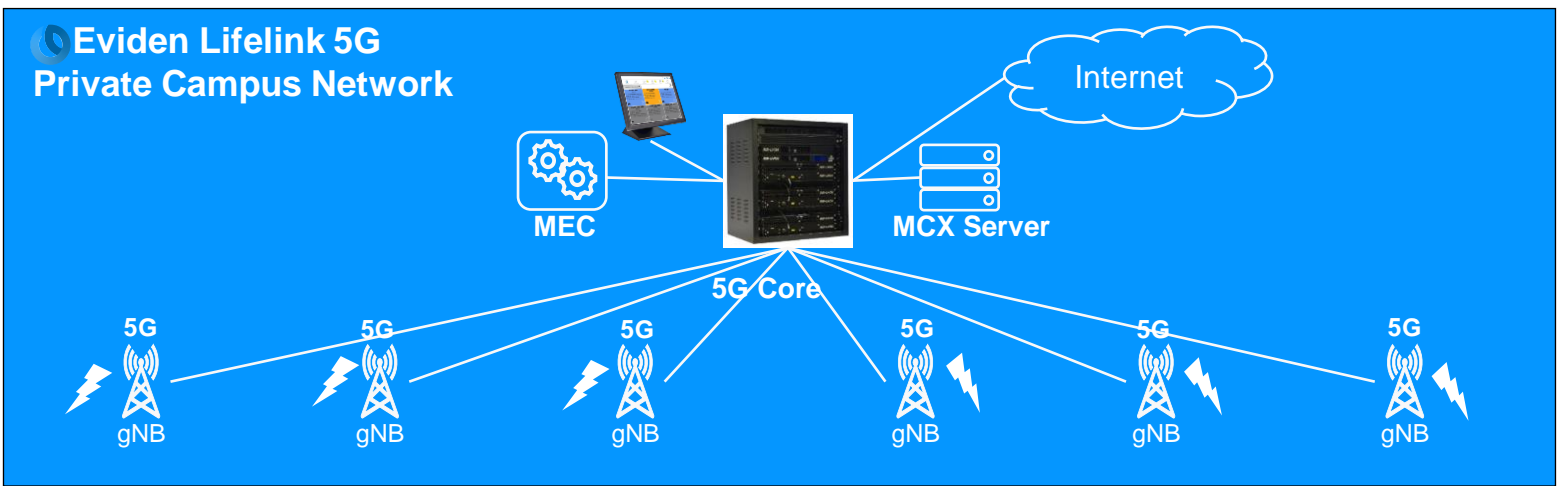
...a complete solution for digitization of your company

Lifelink 5G Solution Architecture

Applications

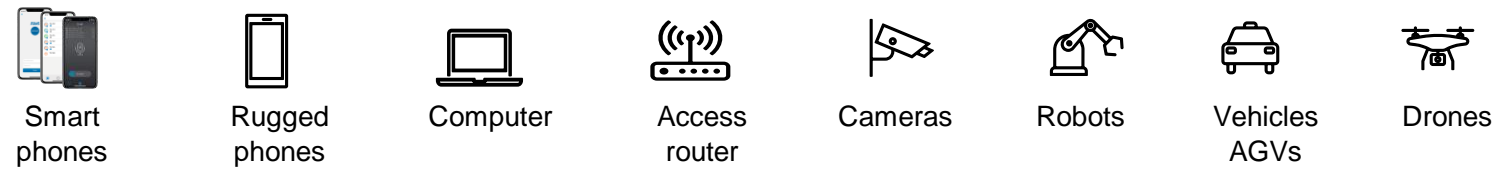


Infrastructure



Devices*

*3rd party



- Data Science
- Data Engineering
- Data Ops
- Deployment
- Configuration
- Consulting
- Managed services

LifeLink 5G Campus + ComputerVision

KI Anwendungen über Private 5G Netze



Abgesetzte Kamera

- Video Capture via 5G Campus Netze



5G Edge router

- Sendet Sensordaten über das 5G-Campus-Netzwerk

5G MEC ComputerVision

- Bietet In-Stream-KI für Echtzeit-Videoanalysen basierend auf Ipsotek



Private 5G Campus Netze

bietet Konnektivität mit hoher Bandbreite und geringer Latenz für entfernte Geräte wie Kameras und Sensoren



Multinetwork Video Dispatcher

- Verknüpft Videostreams mit MCX-Gruppen
- Fernsteuerung bei Videokameras



MCx Client

- Empfängt Streams über MCVideo
- Der MCVideo-Stream wird mit von Computervision generierten Metadaten erweitert

Eviden Lifelink, the smart solution for private networks

Private network

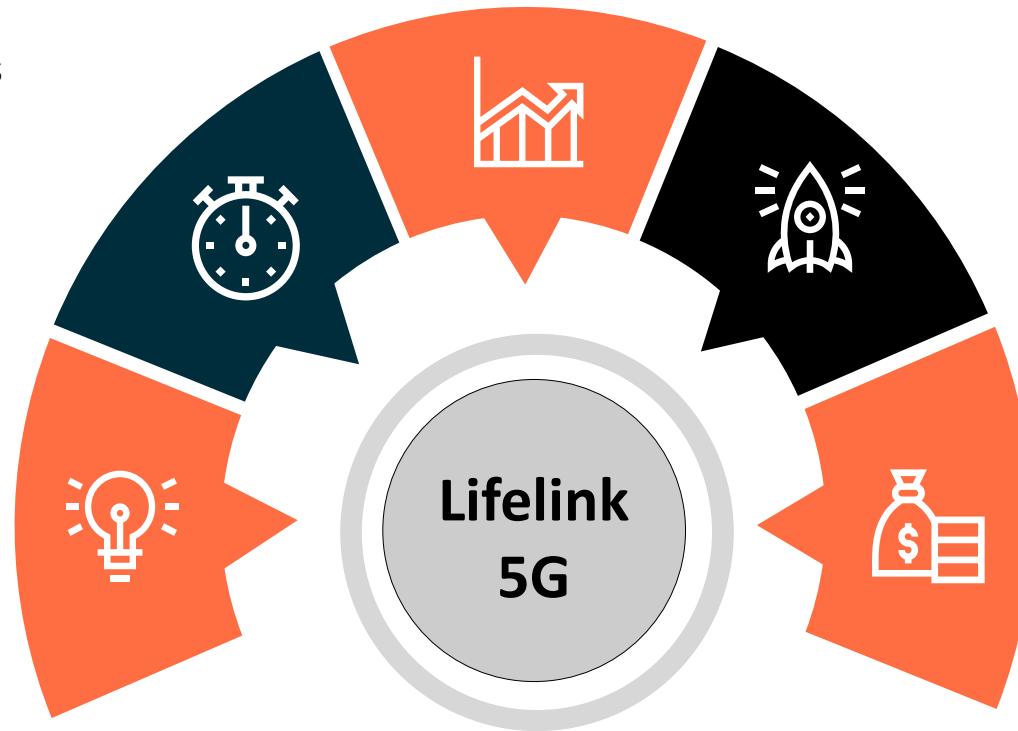
- Supports German private frequency bands
- Independent of public networks
- Eviden offers end-to-end solutions for campus networks (Made in Europe)

Scalable solution

- Scalable solutions, for small, medium and for large campus networks

Interoperable

- Connection to the internet
- Connection to public mobile networks



Easy deployment and operation

- Easy installation and configuration
- Integrated network management

Reliable und safe

- High reliability with redundant system design
- 4G/5G and QoS ensure secure communication
- Eviden offers cybersecurity solutions for maximum security (No.1 in Europe)

Standardized

- Compliant to 3GPP 4G/5G and MCX.
- Open interfaces and open RAN