

Empowering employees

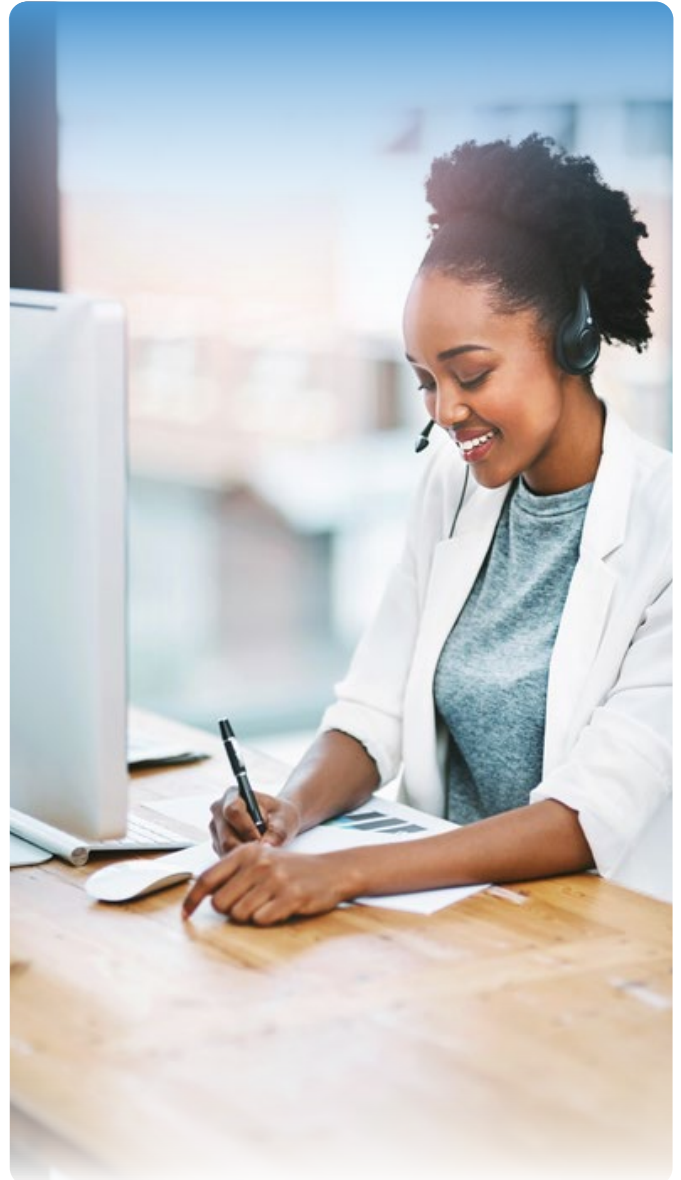
Engaged Employee Experience encompasses the latest tools and technologies, consulting capabilities, and new and existing partnerships with leading experts in the field, all underpinned by clear decarbonization objectives. It is the most comprehensive intersectional set of services on the market today and the only one which combines both traditional Digital Workplace solutions with Employee Experience services.

The new normal

The New Normal is heralding the era of **frictionless working**¹. We believe at Atos that the new digital and distributed way of working imposed by the COVID-19 crisis is not only sustainable but can be further evolved. Technology has transformed the way that most of us work, but now is the time to genuinely become more efficient and effective, breaking through layers of complication and inertia. We are ready to address the changes in the very nature of the way we think about work and these can catalyze a breakthrough in the productivity paradox. We help our clients transition to a "new normal" that enables employees to work anytime, anyplace, on any device without compromising on security, compliance, or governance.

Why Atos?

- **Holistic approach:** All stages, all technologies and components of the workplace, service orchestration.
- Manage co-existence and/or transition from **old to new world of work**.
- Deep **industry expertise** and service excellence.
- Extended global reach and an impressive services portfolio.
- Focus on turning technology into **business value**.
- **Relentlessly innovative, for and with our clients.**



Atos simply is THE leader



Leader
 Magic Quadrant
 Workplace Services
 Europe & NAM



Leader
 Workplace Services
 Global, Europe, NAM



Leader
 Workplace Global



Star Performer
 All 5 archetypes!
 Workplace Global



Atos Engaged Employee Experience platform

Ready to deliver the Future of Work!

Flip from traditional workplace management to modern workplace management that empowers your employees intuitively, securely and instantly from any device.

Design & Adoption

Employee Engagement Services

Collaboration
 Reimagined



Secure Flexible
 Working



Proactive &
 Data-driven



Intelligent
 Care Center



Digital Inclusion & Accessibility

Decarbonized Workplace

Engaged Employee Experience focus

We deliver frictionless working

Design & Adoption

Designing a workplace that drives engagement with Experience Design, Agile Transformation, Change & Adoption – all in a data-driven consultative approach from change to enablement.

Collaboration Reimagined

Imagine your employee experience. Now reimagine it with colleagues feeling empowered because they can work together in real-time wherever they are.

Secure Flexible Working

Revolutionizing how we handle workplace management with modern management tools, Device-as-a-Service delivery and Zero-Trust security best practices all wrapped into one seamless approach.

Digital Inclusion & Accessibility

We bridge the gap between humans and the digital world to enable everyone to achieve their full potential through an end-to-end Inclusive User Experience (IUX) leveraging a range of accessible, assistive technology services.

Employee Engagement Services

Turn a daily grind into an engaging experience with Voice of the Employee, superior service delivery, focused around the user's points of need for safer and smarter work spaces.

Proactive & Data-Driven

Putting data at the heart of the employee experience with data-driven analytics to understand journeys and get insights which we commit to with outcome-based management e.g. with XLAs².

Intelligent Care Center

Embedding real-time intelligence at the heart of end user care. A new generation of users requires a new support experience. We take an omnichannel approach to supporting them wherever they are, whatever their devices are.

Decarbonized Workplace

Whether as a consulting project, or as part of a DLA (Decarbonization Level Agreement) baked into a long-term contract, we'll work with you to help reduce and offset carbon in your workplace services.

The future of work is now

Talk to Atos about tackling the challenges on the new frontier of work

IT organizations enabled business continuity during 2020, and remote work remains critical to maintaining business operations through 2023 and beyond. Temporary remote working solutions deployed in 2020 must be operationalized for long-term use due to the risk of future business-continuity events.³

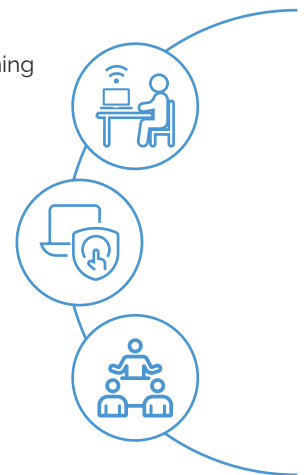
Is your organization ready for the "new normal"?

Finding the right digital evolution to balance humans and technology is key to unlocking productivity and staying competitive.⁴

How does your organization align/measure the needs of users with technology?

60% of professionals who had transitioned to a remote setup said they have better work/life balance, and that 74% of respondents would like to telecommute more after pandemic restrictions are eased.⁵

Does your organization have a clear remote working approach?



What our customers say



1: find out more about frictionless working from Elie Girard [here](#).

2: eXperience Level Agreement

3: Predicts 2021: Digital Workplace Infrastructure and Operations – Gartner, 2020

4: The digital workplace 2021 – Templafy 2020

5: Tech Trends 2021 – Deloitte, 2020

About Atos

Atos is a global leader in digital transformation with 105,000 employees and annual revenue of over € 11 billion. European number one in cybersecurity, cloud and high performance computing, the Group provides tailored end-to-end solutions for all industries in 71 countries. A pioneer in decarbonization services and products, Atos is committed to a secure and decarbonized digital for its clients. Atos operates under the brands Atos and Atos|Syntel. Atos is a SE (Societas Europaea), listed on the Next 20 Paris Stock Index.

The purpose of Atos is to help design the future of the information space. Its expertise and services support the development of knowledge, education and research in a multicultural approach and contribute to the development of scientific and technological excellence. Across the world, the Group enables its customers and employees, and members of societies at large to live, work and develop sustainably, in a safe and secure information space.

[Find out more about us](#)

atos.net

atos.net/career

Let's start a discussion together



For more information: atos.net/en/contact-us

Atos, the Atos logo, Atos|Syntel and Unify are registered trademarks of the Atos group. May 2022 © Copyright 2022. Atos S.E. Confidential information owned by Atos. to be used by the recipient only. This document, or any part of it, may not be reproduced, copied, circulated and/or distributed nor quoted without prior written approval from Atos.