

CLETA electromagnetic speed log

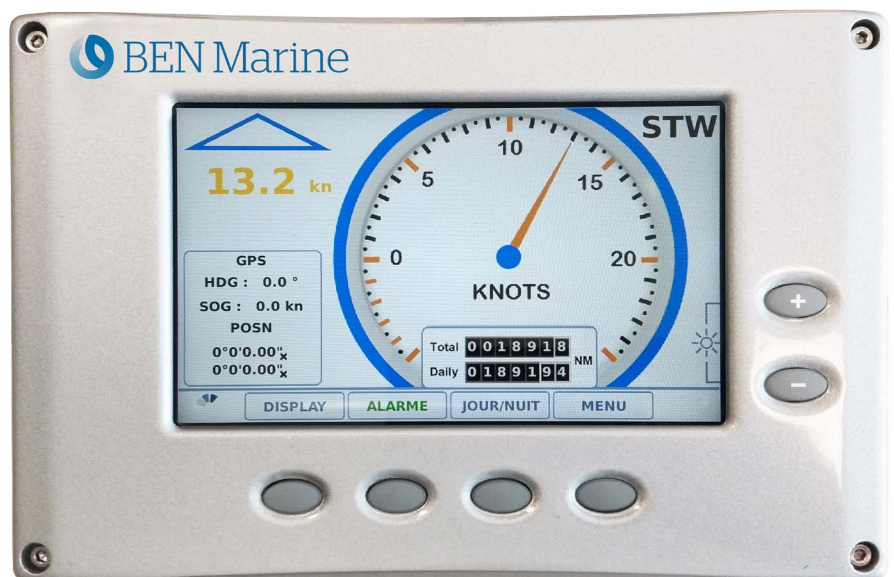
This electromagnetic speed log is the latest member of the BEN Marine range of navigation instrumentation. It combines the well-known quality and reliability of BEN Marine with the latest technologies. A multifunction color display also includes speed-over-ground data from GPS as well as the heading information and more on request.

The CLETA EM speed log standard package consists of:

- One main cabinet
- One transducer
- One hull-fitting

Benefits

- Speed Through Water (STW) from electromagnetic sensor and Speed Over Ground (SOG) from GPS
- Compliant with new SOLAS regulation MSC 334(90)
- Multifunction color navigation data display including speed through water, speed over ground, heading, position, daily and total distance
- IMO type approved
- Compatible with existing entire range of BEN Marine electromagnetic sensors
- Compatible with all navigation peripherals for customized display with new data
- No divers or dry-docking needed during retrofit



CLETA electromagnetic speed log including speed over ground indication and multifunction color display

Specifications

Size	244 x 164 x 95 mm
Weight	4 kg
Power supply	24 VDC 115 VAC or VAC 50/60 Hz
Outputs	1 x 1/200 mile (potential free contact) 1 x 1/100 or 1/200 mile 1 x RS422 isolated NMEA 0183 4800bd or 38400bd 2 x configurable threshold alarms 2 x analog output (0-500 A) or (4-20mA) 2x frequency 1 x BUSCAN NMEA2000
Inputs	1 x GPS antenna
Display	Total distance 99,999.9 nautical miles Daily distance 9,999.9 nautical miles with reset Digital speed 0.9 knot definition Digital galvanometer Day/night display mode

Main features

- **LCD screen for:**
 - Test & Simulation function
 - 2 speed scales available
 - 3 linearization points adjustment
 - Error messages display
 - Alarm control (high and low)
- **English, French or Spanish languages**
- **GPS**
 - Position display (if connected)
 - Speed display (if connected)
- **Mile counter without reset:**
 - 6 digit - unit: 0.1 nautical mile
- **High & low alarm display**
- **Brightness adjustment (keyboard)**
- **Contrast adjustment (potentiometer)**
- **Keys backlighting**
- **Automatic gain**

Standards

IEC 60945 (2002) incl. corrigendum 1 (2008)	IEC 62288 Ed.1.0 (2008)
IEC 61023 (2007)	Wheelmark certification in progress (expected in early 2021)
IEC 61162	

Analog and digital speed displays - Night mode



For more information: benmarine@atos.net

Atos, the Atos logo and Atos|Syntel are registered trademarks of the Atos group. December 2020. © 2020 Atos. Confidential information owned by Atos, to be used by the recipient only. This document, or any part of it, may not be reproduced, copied, circulated and/or distributed nor quoted without prior written approval from Atos.