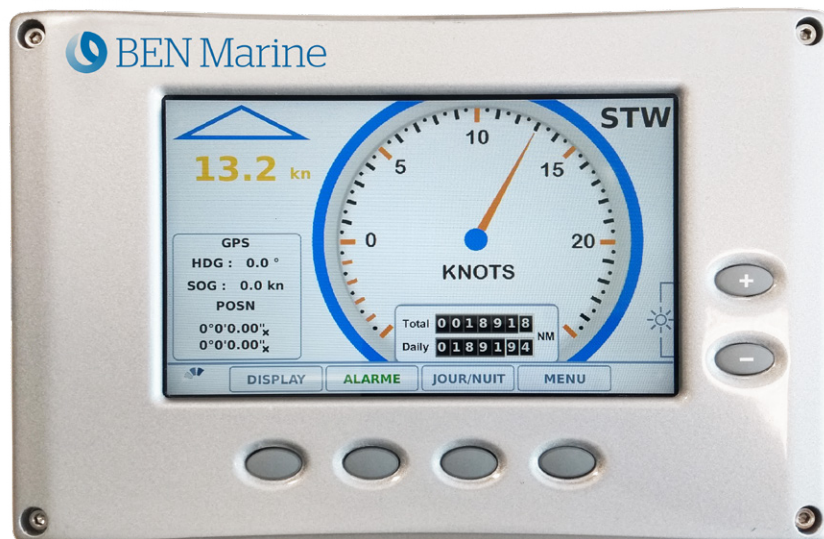


# CLETA electromagnetic speed log

This electromagnetic speed log is the latest member of the BEN Marine range of navigation instrumentation. It combines the well-known quality and reliability of BEN Marine with the latest technologies. A multifunction color display also includes speed-over-ground data from GPS as well as the heading information and more on request.



## The CLETA EM speed log standard package consists of:

- One main cabinet
- One transducer
- One hull-fitting.

## Benefits

- Speed Through Water (STW) from electromagnetic sensor and Speed Over Ground (SOG) from GPS
- Compliant with new SOLAS regulation MSC 334(90)
- Multifunction color navigation data display including speed through water, speed over ground, heading, position, daily and total distance
- IMO type approved
- Compatible with existing entire range of BEN Marine electromagnetic sensors
- Compatible with all navigation peripherals for customized display with new data
- No divers or dry-docking needed during retrofit

# CLETA electromagnetic speed log including speed over ground indication and multifunction color display

## Specifications

<b>Size</b>	244 x 164 x 95 mm
<b>Weight</b>	4 kg
<b>Power supply</b>	24 VDC 115 VAC or VAC 50/60 Hz
<b>Outputs</b>	1 x 1/200 mile (potential free contact) 1 x 1/100 or 1/200 mile 1 x RS422 isolated NMEA 0183 4800bd or 38400bd 2 x configurable threshold alarms 2 x analog output (0-500 µA) or (4-20mA) 2x frequency 1 x BUSCAN NMEA2000
<b>Inputs</b>	2 x dry contact 1 x RS422 NMEA0183 1 x GPS antenna 1 x BUSCAN NMEA 2000
<b>Display</b>	Total distance 99,999.9 nautical miles Daily distance 9,999.9 nautical miles with reset Digital speed 0.9 knot definition Digital galvanometer Day/night display mode

## Main features

- LCD screen for:
  - Test & Simulation function
  - 2 speed scales available
  - 3 linearization points adjustment
  - Error messages display
  - Alarm control (high and low)
- English, French or Spanish languages
- GPS
  - Position display (if connected)
  - Speed display (if connected)
- Mile counter without reset:
  - 6 digit - unit: 0.1 nautical mile
- High & low alarm display
- Brightness adjustment (keyboard)
- Contrast adjustment (potentiometer)
- Keys backlighting
- Automatic gain.

## Standards

IEC 60945 (2002) incl. corrigendum 1 (2008)  
IEC 61023 (2007)  
IEC 61162  
IEC 62288 Ed.1.0 (2008)

## Analog and digital speed displays - Night mode



IMO Type approval - Wheelmark  
by Bureau Veritas