

Robotic Process Automation Build Services

Realize effective and efficient use of Robotic Process Automation (RPA)

RPA Build (Development) Services.

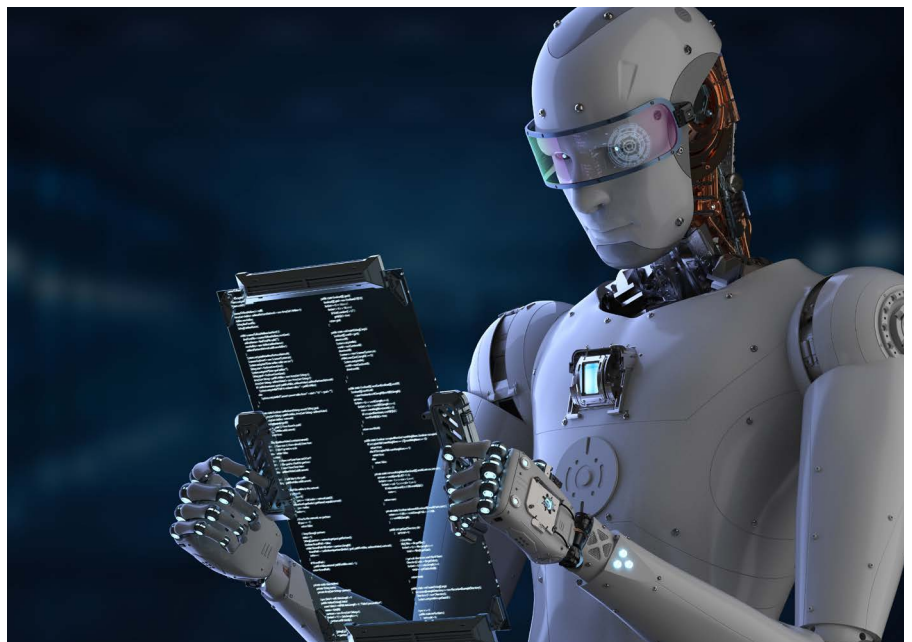
In order to achieve RPA success at scale, it is essential to spotlight a long-term RPA strategy, aligning with changing business processes and technology needs.

Atos RPA Build Services permits you to build robot automations at scale in a controlled, sustainable RPA environment which is agile enough to deliver at the speed of the business.

When you engage Atos for RPA Build Services, your journey into RPA becomes more effective with increased ability to deliver RPA solutions into your organization, and to confidently scale implementations to match business requirements.

Atos RPA Build Services:

- Predictable pricing and duration based "T-Shirt size" process complexity: simple, medium and complex
- Delivery based on RPA best practices, development standards and methodology
- Embedded automated code reviews and automated test framework
- Sprint based agile build methodology
- Roadmaps ready for integration into your project management portfolio
- Recommendations on release management, capacity management and operation management



It is one thing to build a prototype robot to test the automation waters. It is an entirely different matter to build and support robots at scale. RPA has the potential to grow faster than your organization can handle. As you build a qualified pipeline for RPA as part of COE, it becomes a challenge to keep pace with the increasing process automation demand. While building robots, it is important to maintain high quality, best practices and

standards to avoid production downtime and maintenance nightmares.

Atos RPA Build Services delivers using expert RPA developers with skills honed over years of RPA build experience. Atos Build Services minimizes the risk for your organization, promotes concurrent build cycles with high quality and standards, and delivers at scale and speed to meet business demand.

Structured approach, extensive results

The Atos RPA build team comprises industry experts using top tools and techniques. Our team will create a mutually agreed-upon baseline project plan. The Atos Build team will conduct a process review session to assess complexity. Once the process complexity is determined, the building cost and duration can be determined using a T-Shirt sizing pricing model. Typically, a T-shirt size model includes simple, medium and complex categories. On the approval of the request, the robot automation will be built using the

interactive approach (agile). Development cycles are typically organized into three-week sprints. Most robots are completed within two to three sprints. While building the robot, a test automation framework is built directly into the robot promoting both positive and negative automated testing. Additionally, automated code reviews are conducted to ensure all code conforms to best practice standards. Build cycles are tracked using a visual sprint boards promoting transparent communication to stakeholders. At the end

of the build cycle, robots will be deployed to the production and transition them to the operations team.

For sustainable build services, Atos will define build processes, methodology and mechanisms for automatic code review and testing as well as recommendations on a citizen model. Atos will also provide recommendations on the RPA platform configuration, capacity management and release management.

Powerful solution tailored to your environment

Organizations do not need to be concerned about the required number of developers, architects, capacity to build multiple robots, project management and various robots building related activities. Atos Build Services takes ownership of all these tasks. The Atos

Build Services model ensures organizations have flexibility to build robots on demand, at scale, with speed and with quality.

Key outcomes

A proven methodology driving more consistent RPA results, enabling customers to confidently scale RPA investments.

Processes

- Process requirements intake and assessment
- "T-Shirt" based robot pricing
- Sprint based development cycle process
- Automation centric RPA testing process
- Robot release process
- Operation transition process

Tools

- Best practices and standards documents
- RPA capacity tracker
- Process sizing and complexity assessment tool
- Visual build tracker
- RPA build tools
- Automated code review

Additional benefits

A Based on the scalability of the Atos Build Services, the number of robots can grow quickly. It is very important for the organization to decide how these robots will be supported in production. Typically, many of robots run 24/7. If the robots are built by multiple parties, such as vendors, citizen developers or IT, it is important to come up with a dynamic and flexible pricing model and support the framework upfront.

The Atos Operations Services address these concerns with an effective operations model. If the Atos Build Services develops the robots, it is very easy to transition into the Atos Operations Services team seamlessly.

Conclusion

The Atos RPA Build (development) Service is a well-structured service developed by industry experts to build robots on demand, at scale, with speed and quality. It is designed to be agile adapting to the rapidly changing RPA environment. The Atos Build Services allows enterprises to focus on automating various business processes with speed and agility, without worrying about the nitty-gritty of robot build activities. Atos RPA Build Services assure customers a successful enterprise-wide RPA implementation and its benefits.

Timeline

Timeline based on the robot complexity

- Simple: 3- 4 Weeks
- Medium: 5-7 Weeks
- Complex: 8-10 Weeks

Starting with Atos

Contact Atos to get started with RPA Build Services. Atos will immediately provide the details of the engagement, so you can quickly decide to move forward.

Make sure you use the best.

- Atos has partnerships with top-four pure play RPA vendors worldwide.
- It is a trusted partner and advisor to many globally-recognized organizations and brands.
- It is the worldwide IT partner of the Olympic and Paralympic Games.



For more information: yash.malge@atos.net

Atos, the Atos logo, Atos Syntel, and Unify are registered trademarks of the Atos group. May 2019. © 2019 Atos. Confidential information owned by Atos, to be used by the recipient only. This document, or any part of it, may not be reproduced, copied, circulated and/or distributed nor quoted without prior written approval from Atos.