

Je už čas na SAP S/4HANA?

17-10-2019

Trusted partner for your Digital Journey

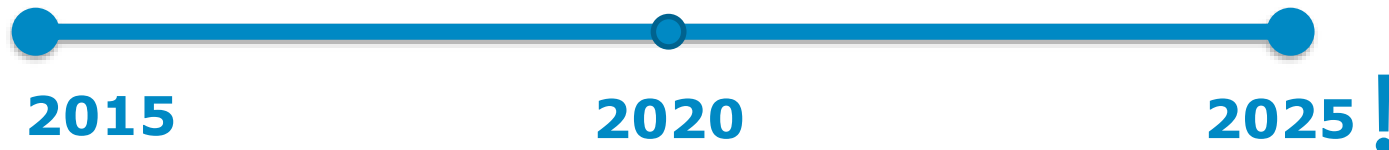
© Atos

Atos

1

Sme v polčase?

Sme v polčase?



- ▶ Prvé predstavenie SAP S/4HANA prebehlo vo februári 2015
- ▶ Odvtedy predstavených niekoľko edícií (1511, 1610, 1709, 1809, 1909)
- ▶ SAP prehlasuje, že podpora štandardného ERP končí v roku 2025

2

Ako ste na tom?

Ako ste na tom?

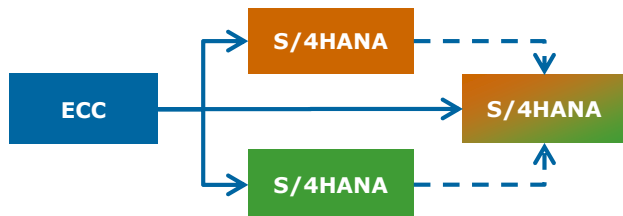
- ▶ Kto je už na SAP S/4HANA?
- ▶ Kto na tom už pracuje?
- ▶ Kto o tom uvažuje?

3

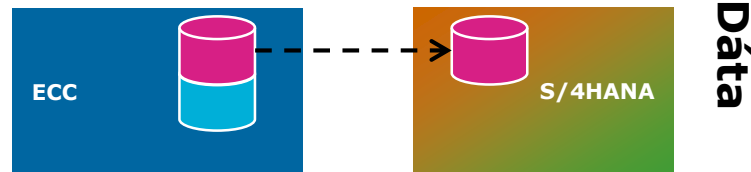
Čo ponúka Atos

Výzvy, ktorým čelia naši zákazníci pri prechode na SAP S/4HANA

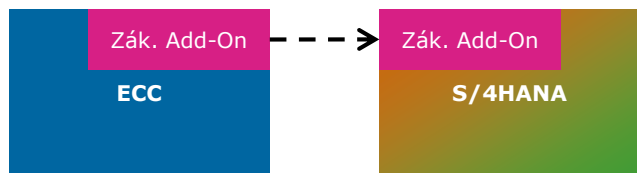
- ▶ Greenfield alebo Brownfield prechod na SAP S/4HANA?



- ▶ Ako na historické dáta?

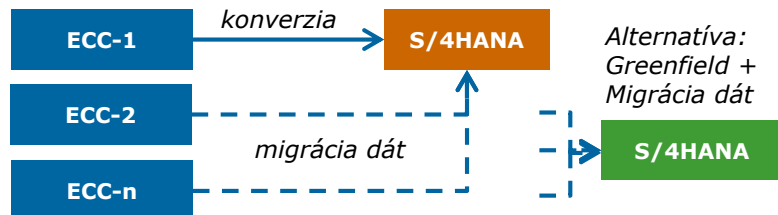


- ▶ Ako riešiť vlastné riešenia v systéme?



Processy

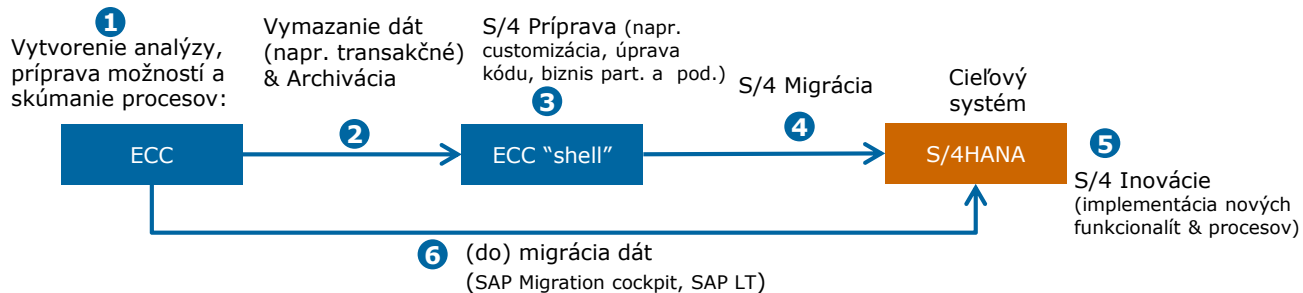
- ▶ Ako sa vysporiadať s ERP landscape?



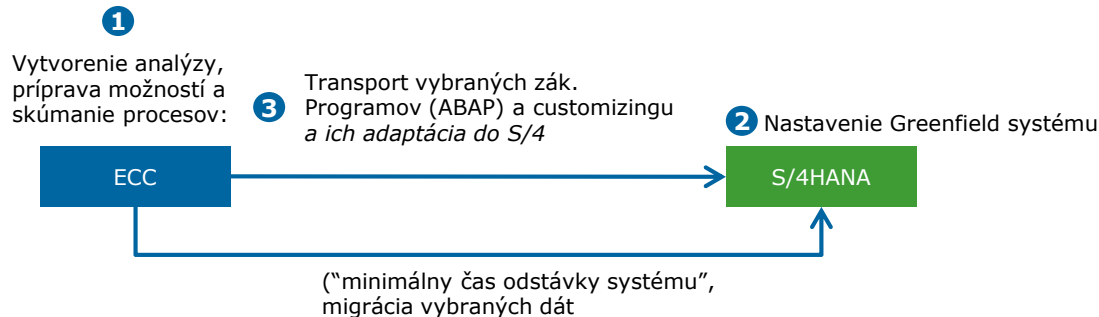
Alternatíva:
Greenfield +
Migrácia dát

Pohľad Atosu: dva hlavné varianty prechodu na SAP S/4HANA

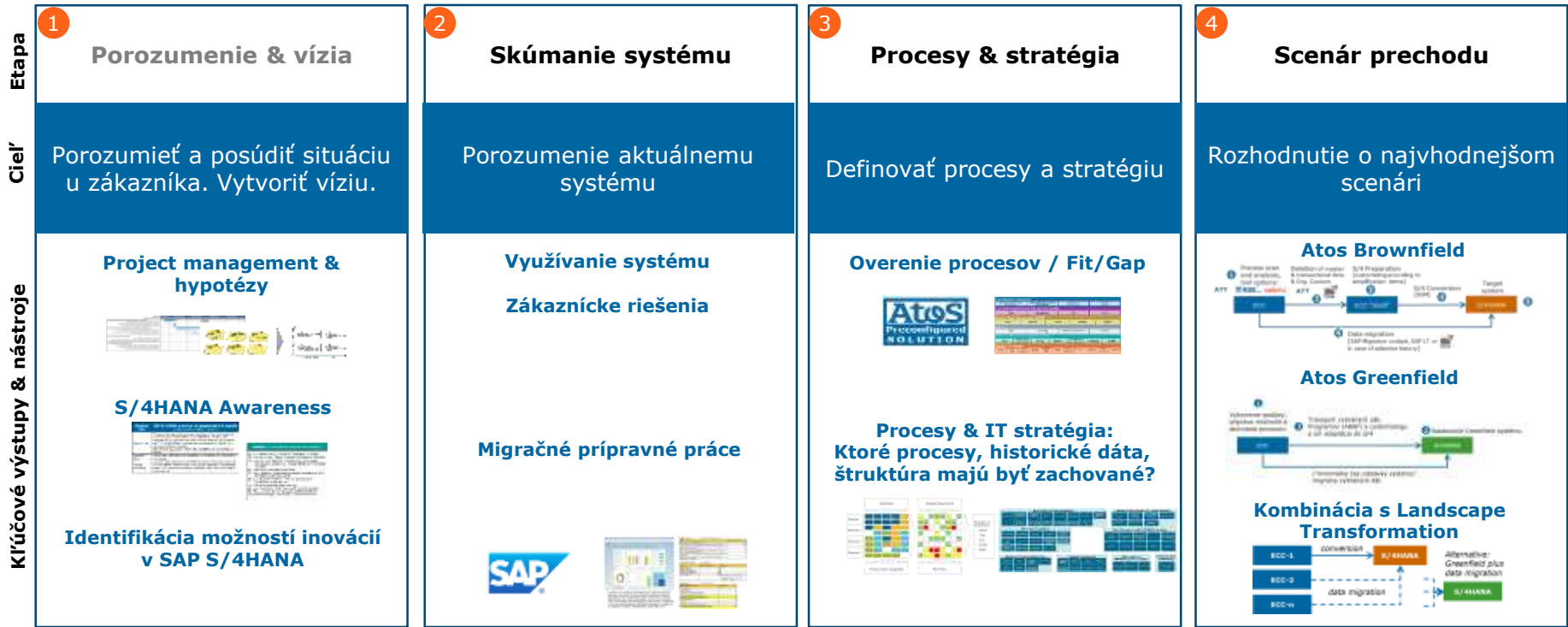
► Atos Brownfield



► Atos Greenfield



Metodológia Atosu – SAP S/4HANA analýza prechodu



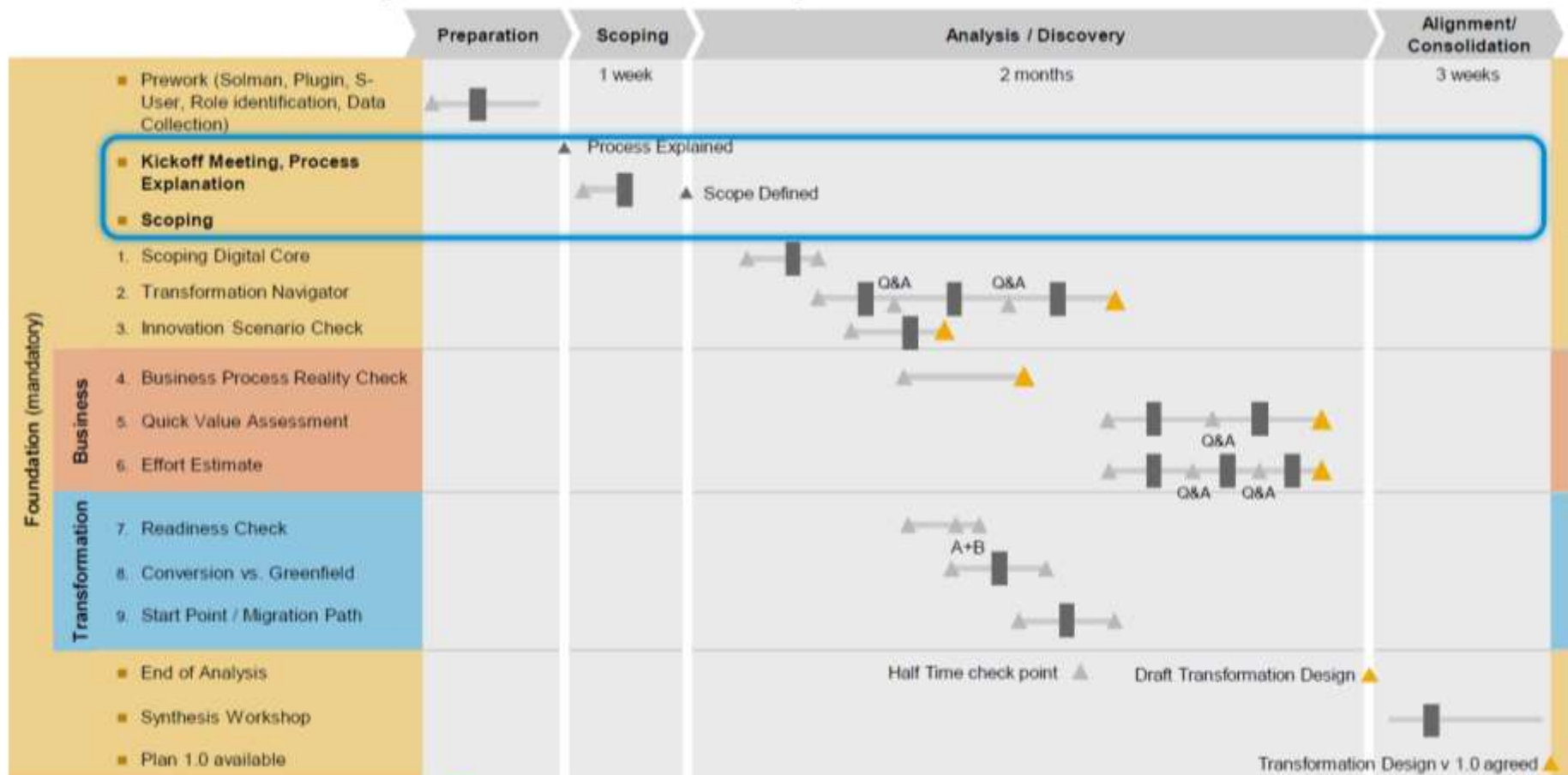
4

Nástroje, ktoré pomáhajú s migráciou

SAP Adoption Starter

- ▶ 90 dňový program spoločnosti SAP zameraný na prípravu prechodu na SAP S/4HANA
- ▶ Absolvovali sme ho spoločne s naším zákazníkom – Ministerstvo školstva, vedy, výskumu a športu SR
- ▶ **Benefit, ktorý ponúka Atos** - spoločne so zákazníkom sme tvorili stratégiu prechodu na SAP S/4HANA

SAP S/4HANA Adoption Starter – 90-day schedule



SAP Readiness check

- ▶ Pripravenosť systému na migráciu
- ▶ Je jedným z výstupov Adoption Starter
- ▶ V súčasnosti verzia 2.0

- ▶ Kontrola celého systému
 - 10 rôznych oblastí, ktoré su analyzované
 - Následne sú zobrazené detailnejšie odporúčania a popis

- ▶ Odporúčame spustiť niekoľko mesiacov vopred

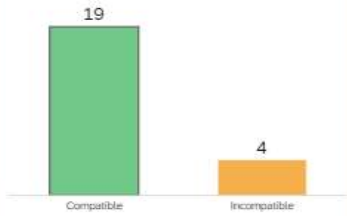


Created At: 9/24/2018 11:36:57 AM
Source: SAP Solution Manager
Custom Code Source System: XUQ
Analyzed System: XTQ

Target Product Version: SAP S/4HANA 1809
Target SAP Stack: Initial Shipment Stack
Database System Type: DB6
Unicode: Yes

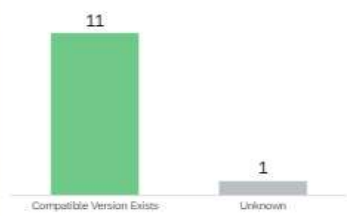
Installed Product Version: SAP enhancement package 6 for SAP ERP 6.0
Operating System: Linux
Operating System Version: 3.0.101-0.47.106.8-default
SAP Kernel Release: 720

Active Business Functions



Updated 5 hour(s) ago Open

Add-On Compatibility



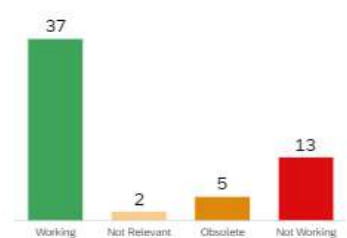
Updated 5 hour(s) ago Open

Business Process Analytics

Critical Number of Documents



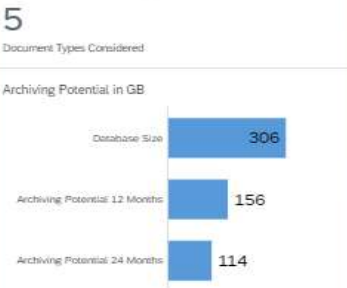
Business Warehouse Extractors



Custom Code Analysis



Data Volume Management

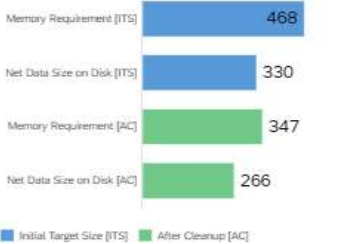


Recommended SAP Fiori Apps

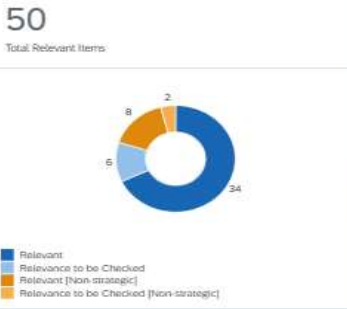


SAP S/4HANA Sizing

Anticipated Maximum Requirement in GB



Simplification Items



SAP Innovative Business Solutions

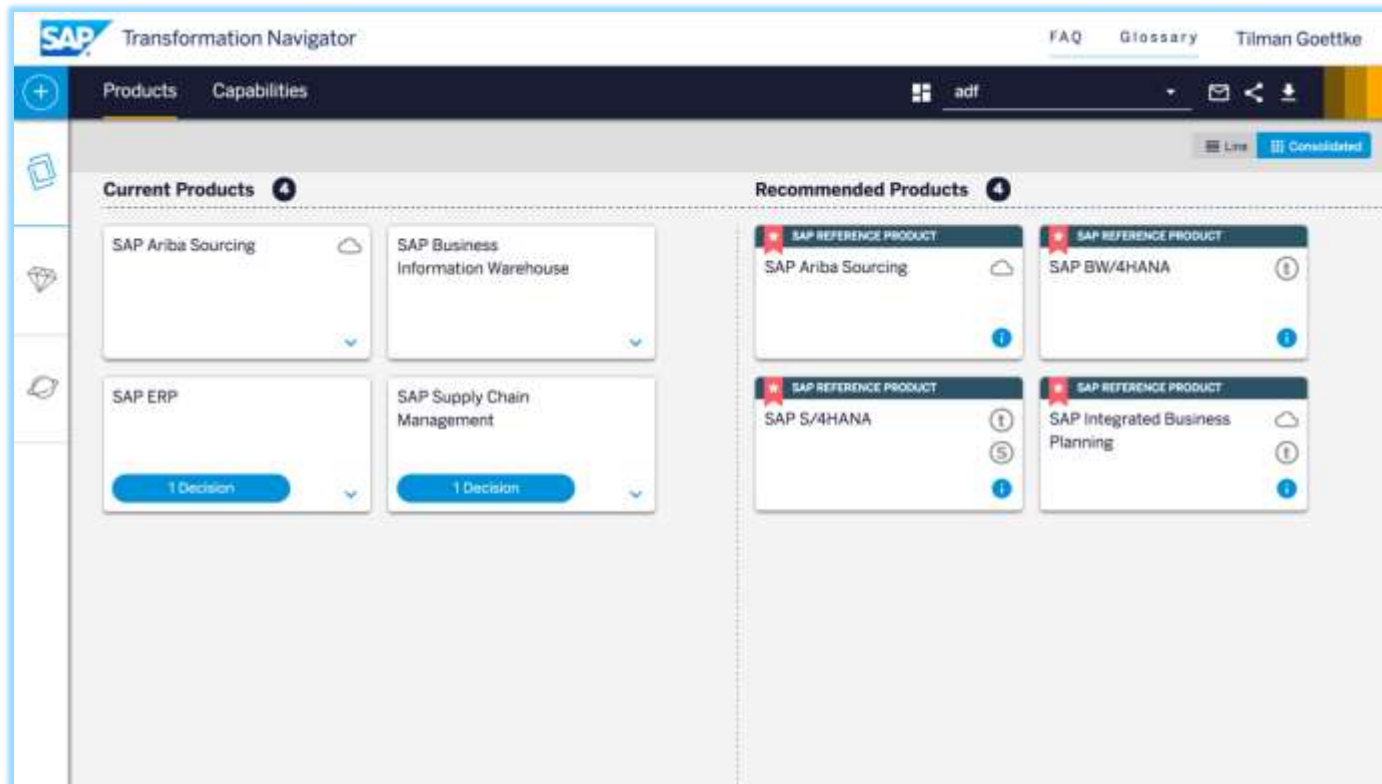
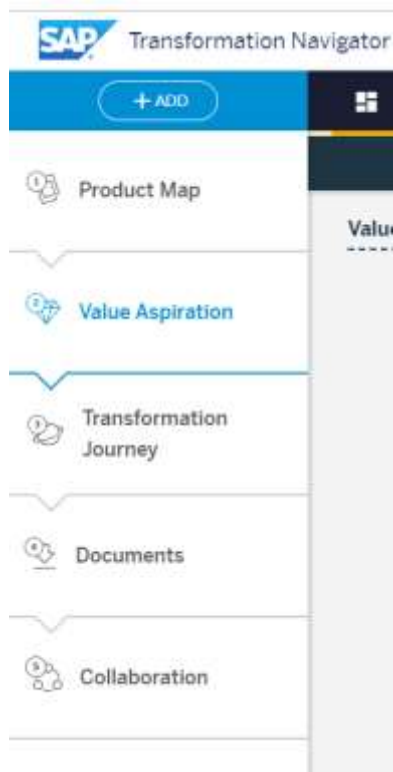
Project Name	Size
ABS Development	Medium
Z Development	Medium
XY Supply Level 1	Large

Showing 3 of 11

Next Steps and Further Information

- [SAP Value Assurance Services](#)
- [Transition to SAP S/4HANA](#)
- [SAP S/4HANA Trial](#)
- [SAP S/4HANA Community](#)

SAP Transformation Navigator



SAP Transformation Navigator

The screenshot displays the SAP Transformation Navigator interface. At the top, the SAP logo and 'Transformation Navigator' are visible on the left, and 'FAQ', 'Glossary', and 'Tilman Goettke' are on the right. Below the header, there is a navigation sidebar with icons for home, diamonds, and a document. The main content area is titled 'Top Value Drivers' and includes a sub-header 'Based on the capabilities of all recommended products.' Below this, a text prompt asks the user to 'Select the value drivers you aspire to improve!' with a 'Go and Set Aspiration' button. The core of the interface is a table with four columns: 'Value Driver', 'Capabilities', 'Associated Products', and 'Business Process Analytics KPIs'. The table lists 13 value drivers, each with a checkbox, a numerical capability score, associated SAP products, and a KPI score.

Value Driver	Capabilities	Associated Products	Business Process Analytics KPIs
<input type="checkbox"/> Reduce finance cost	17	SAP S/4HANA	15
<input type="checkbox"/> Improve on-time delivery performance	16	SAP Integrated Business Planning, SAP S/4HANA	8
<input type="checkbox"/> Increase employee engagement	12	SAP Ariba Sourcing, SAP S/4HANA	0
<input type="checkbox"/> Reduce audit cost	12	SAP S/4HANA	17
<input type="checkbox"/> Reduce uncollectible accounts receivable write offs	11	SAP S/4HANA	6
<input type="checkbox"/> Increase HR FTE productivity	10	SAP S/4HANA	0
<input type="checkbox"/> Reduce days in inventory	9	SAP Integrated Business Planning, SAP S/4HANA	15
<input type="checkbox"/> Reduce inventory carrying cost	9	SAP Integrated Business Planning, SAP S/4HANA	15
<input type="checkbox"/> Reduce procurement function costs	9	SAP Ariba Sourcing, SAP S/4HANA	14
<input type="checkbox"/> Reduce revenue loss due to stock-outs	9	SAP Integrated Business Planning, SAP S/4HANA	12
<input type="checkbox"/> Reduce HR cost per employee	8	SAP S/4HANA	4
<input type="checkbox"/> Reduce manufacturing cycle time	8	SAP S/4HANA	13

SAP Transformation Navigator

Your Transformation Journey

Sort by:
Own Priority

Current Product	Recommended Product	Transition Type	Value Drivers	Enabled Capabilities	Set Your Priority
SAP ERP	SAP S/4HANA	Conversion	12	11	1
SAP Fiori principal apps for SAP ERP	SAP Fiori for SAP S/4HANA	New Access Method	3	1	1
SAP NetWeaver	SAP BW/4HANA	Conversion	0	0	1
SAP BusinessObjects Mobile	SAP BusinessObjects Business Intelligence platform	Upgrade	3	4	2
SAP Fiori for SAP ERP	SAP Fiori for SAP S/4HANA	Conversion	2	1	2
SAP NetWeaver	SAP HANA, platform edition	Process Transformation	7	4	3
SAP ERP	SAP Business Planning and Consolidation, version for SAP NetWeaver	Context-specific	1	3	3
SAP ERP	SAP Process Control for SAP S/4HANA	Context-specific	2	2	3
SAP NetWeaver	SAP NetWeaver Application Server for ABAP innovation package	Context-specific	0	0	5
SAP ERP	SAP Supplier Relationship Management	Context-specific	0	0	5
SAP ERP	SAP Cash Application	Context-specific	2	1	—
SAP ERP	SAP Invoice and Goods Receipt Reconciliation	Context-specific	1	1	—

5

Naše skúsenosti

Migrácia na SAP S/4HANA

- ▶ Naším zákazníkom je medzinárodná farmaceutická spoločnosť
- ▶ Migrácia na SAP S/4HANA z ERP
 - Aktuálne prebieha v Rumunsku
 - Postupne plánované všetky krajiny, v ktorých ma spoločnosť pobočky
- ▶ SAP S/4HANA na Microsoft Azure Cloud



Migrácia na SAP S/4HANA

- ▶ Cieľom je vytvoriť pilotný projekt migrácie a implementácie SAP S/4HANA na systéme v Rumunsku
- ▶ Globálny + lokálny tím
- ▶ SAP Activate Metodológia
- ▶ Agilný prístup v oblasti vývoja, prepojení, migrácie
- ▶ Viaceré moduly: PP, MM, SD, FI, CO, EHS, WM, QM, BW
- ▶ Greenfield

Naše referencie



► Česká správa sociálního zabezpečení

- Prebehla migrácia na SAP HANA DB. V súčasnosti prebiehajú prípravné práce. Migrácia (Brownfield) na SAP S/4HANA je naplánovaná na 2020.

► Spracované štúdie realizovateľnosti a návrhy migrácie pre viacerých zákazníkov

- Rajo, Česká pošta, Iveco



IVECO

► Agrotec

- Prebieha implementácia SAP S/4HANA
- Kombinácia Greenfield a Brownfield

AGROTEC
Group

Ďalšie referencie z Európy

- ▶ **Európsky parlament** - Greenfield implementácia SAP S/4HANA On Premise



- ▶ **Wiener Krankenanstalten verbund (KAV Hospitals)**

- Greenfield implementácia SAP S/4HANA On Premise a konsolidácia ERP



- ▶ **2 sisters Food Group (UK,IR)**

- ▶ **Volkswagen (DE)**

- Greenfield implementácia



Rozdávame

- ▶ Atos ponúka prvým dvom prihláseným úvodný jednodňový workshop zdarma 😊
- ▶ Akcia platí v prípade, ak plánujete začať s projektom v roku 2020
- ▶ Za účasti vašich stakeholderov

Thank you

For more information please contact:

M+ 421 903 864 212

matej.bednar@atos.net

katarina.sretterova@atos.net

Atos, the Atos logo, Atos Syntel, and Unify are registered trademarks of the Atos group. October 2019. © 2019 Atos. Confidential information owned by Atos, to be used by the recipient only. This document, or any part of it, may not be reproduced, copied, circulated and/or distributed nor quoted without prior written approval from Atos.

The Atos logo is displayed in a bold, white, sans-serif font. The letter 'o' is stylized with a white circle inside it. The background of the slide features large, overlapping blue circles of varying shades.