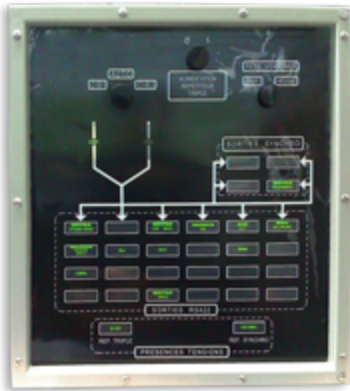


GN100



Main functions:

GN100 is a Navigation Data Distribution Unit (NDDU), which enables:

- the acquisition of navigation information from a global navigation system:
 - latitude,
 - longitude,
 - heading,
 - roll,
 - pitch,
 - speed,
- its processing in the form of digital data,
- its conversion to synchro signal for heading information.

Digital and synchro information is then distributed to users.

Access management is secured with a blanking feature of any classified navigation information, which can be set up with the HMI.

Architecture:

GN100 consists of a ruggedized housing, including:

- 16 x electronic modules,
- 1 x 28VDC - 115VAC 400Hz convertor to be used as a reference for the four synchro outputs,
- 1 x PCB to display I/O status on the front panel of the housing,
- 1 x back plane to interface modules and connectors.

Exploitation modes:

Navigation information comes from two redundant sources (not provided with GN100).

A switch on the front panel of GN100 enables to choose between two modes:

- Automatic mode: the default source is selected. If a default occurs, the input is automatically switched to the second source.
- Forced mode: the source can be selected manually.

Features:

With an ergonomic HMI, user can configure the frame distributed by each output.

Three authorization levels are implemented to use GN100:

- User,
- Administrator,
- Super-administrator.

Network security:

In super-administrator a white/black list can be implemented with filter on MAC address.

To ease the maintenance, each output is equipped with two testing points and one cut-off switch, located on the front panel of the housing.

Security Protection

A system of log file is present, and different information can be recorded:

- Time
- Event Type
- MAC address of the PC that created the event

Inputs:

2 x isolated RS422A asynchronous serial link

Outputs:

- 24 x isolated RS422A asynchronous serial links
- 4 x synchro detection
- 1 x synchro reference

User interfaces:

Outputs status are displayed by three colours LED:

- green for correct transmission,
- red for default,
- switched off for inhibited output.

Environmental data:

- Main housing in grey mechanically-welded assembly
- Power supply: 28VDC
- Power consumption: 480W
- Weight: 46kg
- Dimensions: 550mm x 500mm x 450mm (excluding connectors and attachment elements)
- Noise: less than 56dB
- Cooling: natural convection
- MTBF: >70 000 hours

Standards compliance:

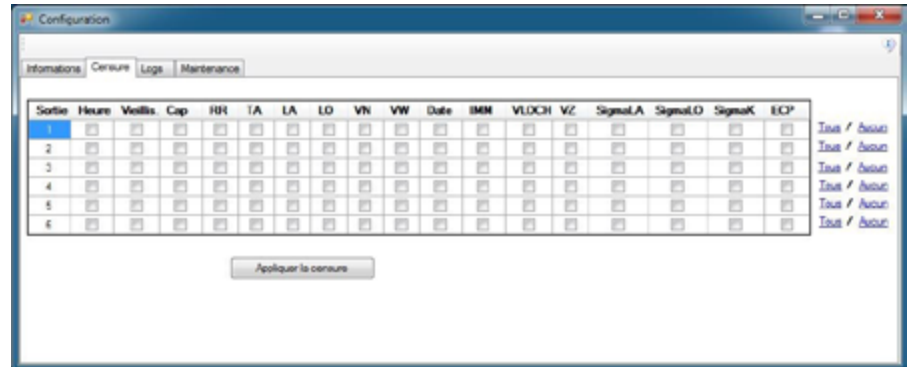
- GAM EG13
- IEC 60068
- NF C 20-010
- NF C 20-508
- NF C 20-516

Product reference:

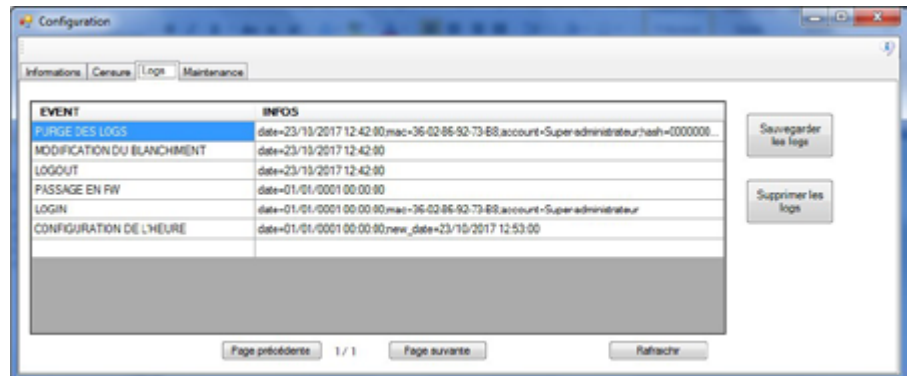
- NATO code: F7582
- Options: on demand

Designed and made in France by Atos.

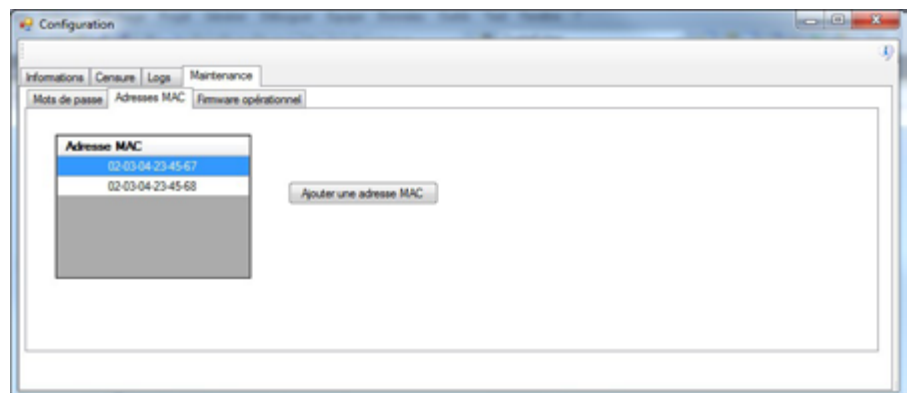
Blanking feature



Log



Blanking list



For more information
benmarine.fr
benmarine@atos.net

Atos, the Atos logo, Atos Syntel and Unify are registered trademarks of the Atos group. October 2019 © Copyright 2019, Atos S.E. Confidential information owned by Atos, to be used by the recipient only. This document, or any part of it, may not be reproduced, copied, circulated and/or distributed nor quoted without prior written approval from Atos.