

SM2000 Sensor

Smart sensor

The SM2000 electromagnetic sensor is fitted with 3 m cable, with connectors. This is an intelligent and adjustable sensor. It meets the climatic, mechanical and radio electrical resistance standards applicable to equipment onboard navy ships. It can also be integrated in ROV (remotely operated underwater vehicle). SM2000 consists of:

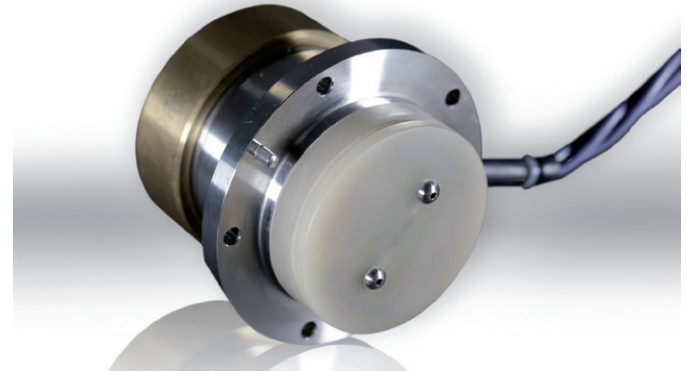
- One smart sensor
- One 3 m cable with connectors

Characteristics

- Interface RS422 NMEA 0183 format
- Power supply: 12 VDC to 16 VDC
- Output: 1 x RS422 NMEA 0183 format communication
- Input: 1 x RS422

Options

- RS422 customer's format on request
- Possibility to add an external DCC (distributor and commutation cabinet)



Dimensions

- Diameter: 64 mm
- Depth: 92 mm
- Weight: 2 kg