

Inside a computer vision-enabled airport



Atos

The global aviation industry is undergoing rapid transformation in just about every area of passenger travel. Customer loyalty is now earned not just by on-time departures and travel perks but also by the demand for safe, secure, and contactless travel. With the help of AI and Computer Vision, airports are now able to deliver a more safe and personalized travel experience for passengers whilst maintaining a safe working environment for employees. From security to flight check-ins, baggage claim and even plane inspections — every step of the journey will be touched by AI and Computer Vision in the foreseeable future.

Whether moving people or goods, transportation environments are in constant motion. Railways, airports, cargo ships, and public and private transportation are comprise complex use cases ideal for computer vision. They require real-time situational awareness, based on the analysis of many different data points, which requires compute and storage resources at the edge.



Aviation challenges

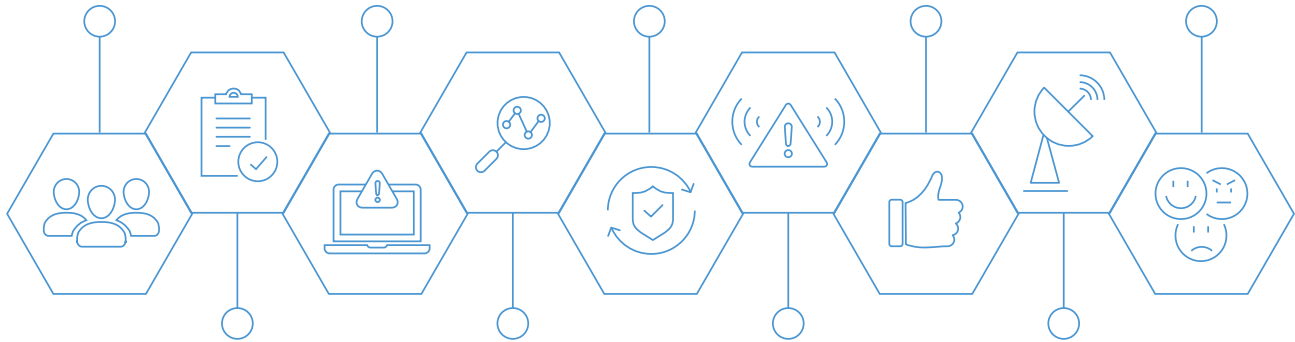
Ensuring passengers have a safe & smooth journey

React in real-time to incidents

Maintaining a safe, yet unobtrusive security protocol

Providing a first-class frictionless experience to traveller's

Maintain security operations throughout the passengers journey



Proactively manage crowds and queues

Support and analyze multiple video streams simultaneously

Providing real time alerts on stocks and instore analytics

Overcome poor network and bandwidth saturation

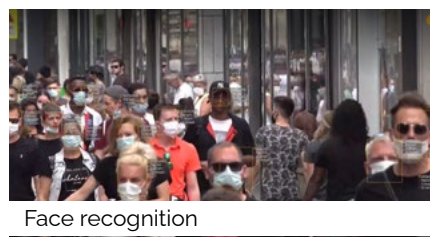
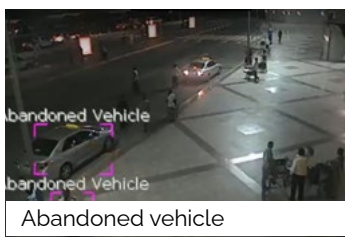
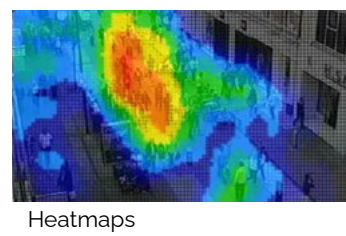
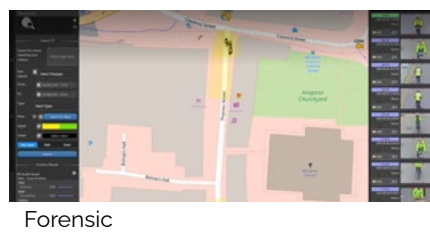
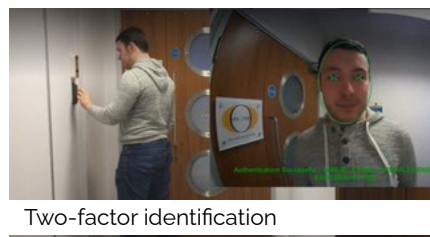


CVP off-the-shelf AI models & alerts

With 250 camera deployed, we are able to run +49 use case rules.



Examples of rules & alerts



Our solution

Atos Computer Vision Platform

Atos, global leader in Edge, offers full end-to-end computer vision solution, which covers edge hardware (BullSequana SA20G, BullSequana Edge and BullSequana Edge nano), AI software (Ipsotek VISuite & DataSentic) and managed services. Our AI software portfolio offers off-the-shelf +150 pre-built AI models across industries. These models can be easily retrained with your own data or 100% custom-built for specific needs thanks to our worldwide data science labs.

Patented Rule Based Engine

The core Video Analytics component of VISuite AI is Ipsotek's patented Scenario-Based Rule Engine (SBRE), a powerful tool that precisely defines behaviours of interest, replicating the way they would unfold in dynamic and complex real-world environment. This allows operators to calibrate alarms to only be raised on specific behaviours or scenarios, minimising false and nuisance alarms. Ipsotek VISuite enables up to 32 rules to be applied to a camera stream using a single, perpetual software license.

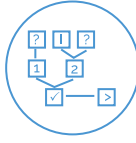
Benefits

- All-in-one: edge computing hardware range, AI software & service
- Highly accurate pinpointing of target behaviours
- Low false alarm rate
- Rapid configuration and deployment
- Reliable detection in adverse conditions
- Tight integration with Edge Device Sub Systems

Key features



Pre-Trained AIVA Detection, Classification, & Tracking Engine



Flexible advanced scenario mapping with 100+ templates



Custom Reporting



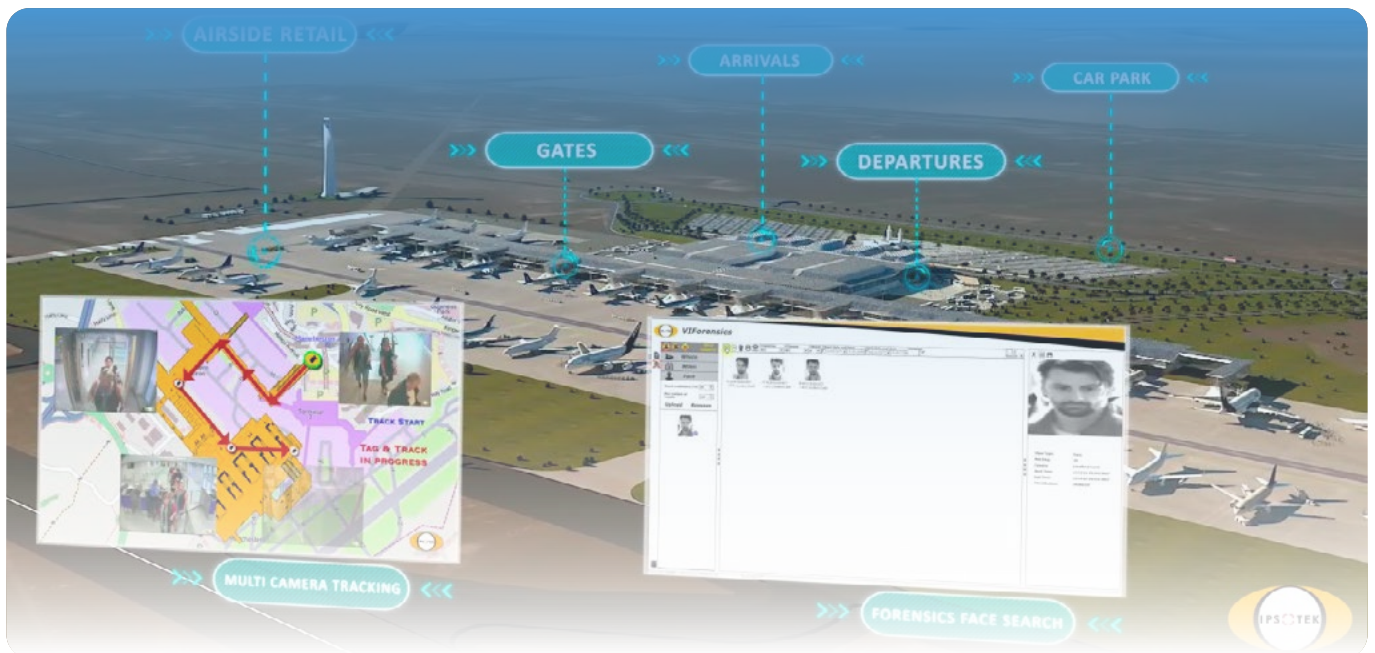
Real Time Alerts

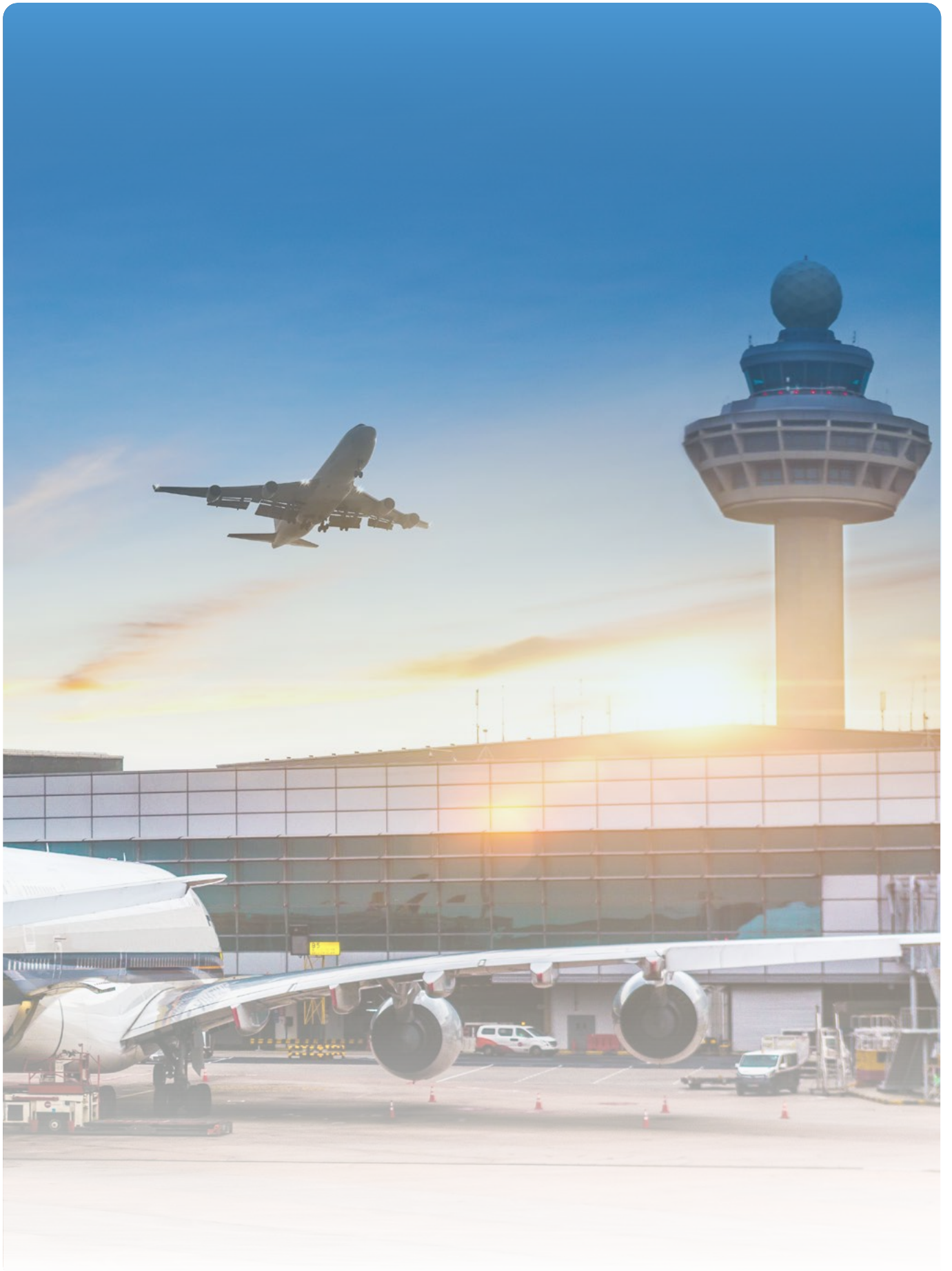


Post Event Search and Tracking



Detailed API & 3rd Party Integrations





References

Ipsotek's first airport deployment was in 2007, since then our Intelligent Video Analytics ("IVA") and Facial Recognition ("FR") solutions have been successfully deployed across thousands of cameras in more than 35 airport projects around the world. Our technology is trusted and approved by airport operators, airlines, transportation authorities and government Ministries of Interior and we currently protect more than 400 million passenger journeys per annum (based on ACI forecasts for 2018).



Our offering integrates with many of world's leading security manufacturer's products. These include:

Advancis WinGuard | Avigilon Control Center | BAE Systems UVMS | Cathexis Vision | CNL IPSecurity Center | FLIR Chameleon | FLIR Latitude | Genetec Security Center | GeutebruckGeViScope | IndigoVision Control Center | Maxxess e-fusion | Milestone Xprotect | Pelco VideoXpert | Siemens Surveillance | Synectics Synergy3 | UTC Video Security Center | ViconValerus | Vidsys Enterprise

For more information please visit us on ipsotek.com or <https://atos.net/en/solutions/ai-software> or contact our offices below



Our offices

Ipsotek Ltd
UK & Europe
 (+44) 20 8971 8300
sales.uk@ipsotek.com
 Address
 Tuition House, 27-37 St George's Road
 Wimbledon, London SW19 4EU, UK

Ipsotek DMCC
Middle East & Africa
 (+971) 4 551 5102
sales.me@ipsotek.com
 Address
 2001, X2 Tower, Cluster X, JLT PO Box:
 214607, Dubai, UAE

Ipsotek PTE Ltd
APAC
 (+65) 6513 9723
sales.apac@ipsotek.com
 Address
 60 Paya Lebar Road, #11-30 Paya Lebar
 Square, Singapore 409051

About Atos

Atos is a global leader in digital transformation with 109,000 employees and annual revenue of c. € 11 billion. European number one in cybersecurity, cloud and high performance computing, the Group provides tailored end-to-end solutions for all industries in 71 countries. A pioneer in decarbonization services and products, Atos is committed to a secure and decarbonized digital for its clients. Atos is a SE (Societas Europaea), listed on Euronext Paris and included in the CAC 40 ESG and Next 20 Paris Stock indexes.

The [purpose of Atos](#) is to help design the future of the information space. Its expertise and services support the development of knowledge, education and research in a multicultural approach and contribute to the development of scientific and technological excellence. Across the world, the Group enables its customers and employees, and members of societies at large to live, work and develop sustainably, in a safe and secure information space.

[Find out more about us](#)

atos.net

atos.net/career

Let's start a discussion together



Atos is a registered trademark of Atos SE. June 2022.
© Copyright 2022, Atos SE. Confidential Information owned by Atos group, to be used by the recipient only. This document, or any part of it, may not be reproduced, copied, circulated and/or distributed nor quoted without prior written approval of Atos.