

# DirX Access V8.3

Web Access Management and Identity Federation



DirX Access is a comprehensive, cloud-ready, scalable, and highly available access management solution providing policy-based authentication, authorization and federation for Web applications and services.

DirX Access delivers single sign-on, versatile authentication, SAML- and OAuth-based identity federation and proxying, just-in-time provisioning, entitlement management and policy enforcement for applications and services in the cloud or on-premise.

# Web Access Management and Identity Federation

Everything and everyone is always online, and securing access to applications provided either as on- and off-premise services or from the cloud has never been more important.

Businesses and government agencies are accelerating the formation of online partnerships to respond quickly to potential revenue opportunities, outsource non-core functions, and deliver the widest variety of services to their users.

To improve operational efficiency and respond to user demand, they continue to put more and more critical data and applications online for information sharing and self-service by consumers, mobile employees, channel partners and suppliers.

Cloud adoption has soared as it has proved to offer great economies of scale for many organizations by providing a lower-cost, flexible way to use applications and services.

Meanwhile, people have come to expect the online services they use to be always-available, on-demand one-stop shopping experiences accessible through a single login and providing them with the same look and feel no matter what business they are transacting. With the recent news of massive security breaches of online service databases and the rise in phishing, spoofing, and other fraudulent online activities, users are also beginning to worry that they are giving up too much of their critical identity information to too many Web sites. While users may want to have a few different identities to protect their privacy, creating and maintaining a one-to-one identity relationship with each online service provider is a tedious chore that can lead to poor access credentials.

Building a business-agile virtual enterprise using on-premise applications and private and public cloud or software as service offerings involves numerous security challenges to provide end-to-end security. The emergence of cloud, mobile and social computing has heightened the need for strengthened access controls to ensure compliance with organization authentication and authorization policies. Partners must share or integrate their identity data, but they must do it without overloading their IT administration or inadvertently creating security holes. To maximize user satisfaction, they must provide for secure, seamless transactions between services offered by disparate sites in different security domains, and these transactions must be completely auditable from beginning to end to prove regulatory compliance. To improve the user experience and ease the user login burden, partners must offer single sign-on (SSO) capabilities to applications and services hosted internally or in the cloud. They must also provide rapid onboarding of new users to cloud services to avoid the daunting task of manually and individually provisioning and managing

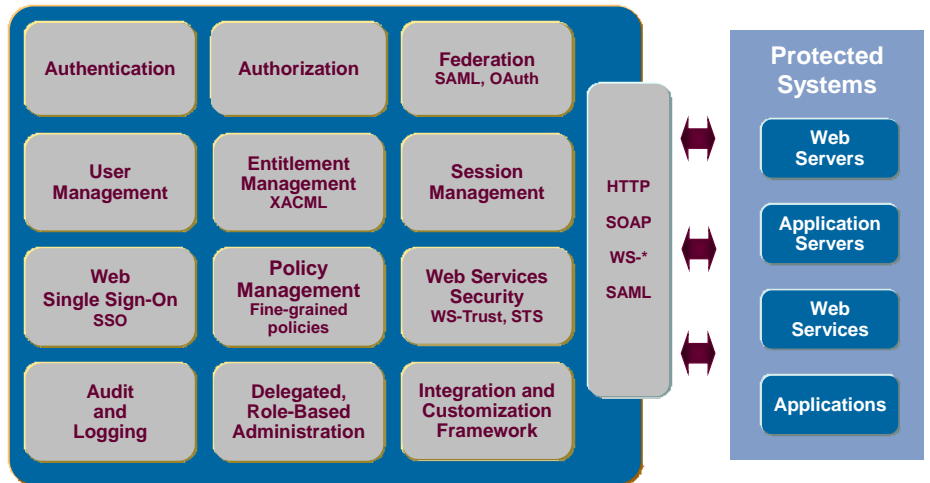


Figure 1: DirX Access Functionality

users in each software as a service (SaaS) directory. Partners also need to consider security models for online user transactions that move collection and control of identity information away from online service providers and into the hands of their users and assign the management of this data to online identity providers.

## Next Generation Web Access Management with DirX Access

These challenges are driving the design and deployment of new security models for Web access management (WAM). Identity federation and secure Web services are joining authentication, authorization, audit, and Web SSO as essential capabilities for protecting Web resources against unauthorized use in a flexible way. DirX Access is a comprehensive Web access management, Identity Federation, and Web Services Security solution protecting resources against unauthorized use. DirX Access:

- ▶ Provides for the consistent enforcement of business security policies through external, centralized, policy-based authentication and authorization services.
- ▶ Enhances Web user experience through local and federated single sign-on (SSO).
- ▶ Secures eGovernment and eBusiness initiatives and provides seamless integration with business and organizational partners through identity federation.
- ▶ Protects Web services and applications with authentication and authorization services, both on the premises and in the cloud.
- ▶ Provides just-in-time provisioning to automatically create user accounts.
- ▶ Decouples security management such as authentication and authorization from application logic and ensures consistent, fine-grained entitlement management across multiple applications and services.

- ▶ Supports regulatory compliance with audit functionality, both within and across security domains.

## Authentication, Authorization and Audit – Core Functionality for Access Management

Authentication is the process of verifying the identity of a user requesting a service or a resource, while authorization is the process of verifying that an authenticated user has the right to access a requested service or resource. Authentication and authorization answer the questions "Who are you?" and "What are you entitled to do?"

Authentication and authorization address the real-time enforcement of enterprise security policies, while audit automatically records these transactions and stores these records securely for later compilation in reports to provide analytical insight and transparency in the identity and access management processes.

The processes and technologies used to manage the users and their life cycles are referred to as identity management. The set of processes and technologies to manage, deploy, enforce and audit access control policies across multiple enterprise applications, services, and systems is referred to as authorization or entitlement management.

## Authentication (Verifying Who You Are)

With DirX Access, authentication is provided as an external, central service that supports a variety of well-known authentication methods, such as passwords, X.509 certificates, Integrated Windows Authentication, smart cards, HTML forms, one-time-password (OTP) tokens, biometrics and callback/out-of-band authentication. Administrators can apply the method that best matches the security requirements of

each individual application or resource without rewriting or even touching the application. Decoupling authentication from the application or resource allows the authentication service to scale easily - administrators can add new authentication methods without affecting the applications that depend on the service. Centralized authentication services also enable SSO. Users present their login credentials once, and are then allowed to access all applications and resources within the enterprise security domain for which they are authorized without having to re-authenticate/log in again. Finally, the DirX Access central authentication service allows authentication management to be concentrated in one configurable component. Because an external, central service bypasses the need for per-application authentication, users no longer need to keep track of multiple login credentials, and administrators no longer need to maintain and support redundant authentication mechanisms.

The authentication services provided by DirX Access include initial user authentication, SSO and federated authentication.

### Initial User Authentication

Initial authentication refers to the first time a user authenticates against the system. It is based on a user account established in DirX Access and uses standards-based initial authentication mechanisms such as:

- ▶ SSL/TLS client authentication through X.509 certificates including path validation, OCSP support, CRL and ARL
- ▶ HTTP basic authentication through username/password
- ▶ HTML form-based authentication through username/password
- ▶ HTML form-based authentication with OTP algorithms based on IETF RFC 2289, IETF RFC 4226 (HOTP) and IETF RFC 6238 (TOTP)
- ▶ HTTP authentication through Integrated Windows Authentication (IWA) using the SPNEGO, Kerberos and NTLM authentication protocols

DirX Access supports multi-factor authentication by combining two or more authentication methods sequentially; for example, username/password plus additional verification via OTP values or username/password plus an external validation.

DirX Access can validate the user credentials internally by performing the authentication itself (the default), or it can externalize the validation task to an external validation service.

Externalizing validation is open to various algorithms and an interface for third-party verifiers supports token-type authentication credentials; for example, SAP logon tickets.

DirX Access can easily integrate existing au-

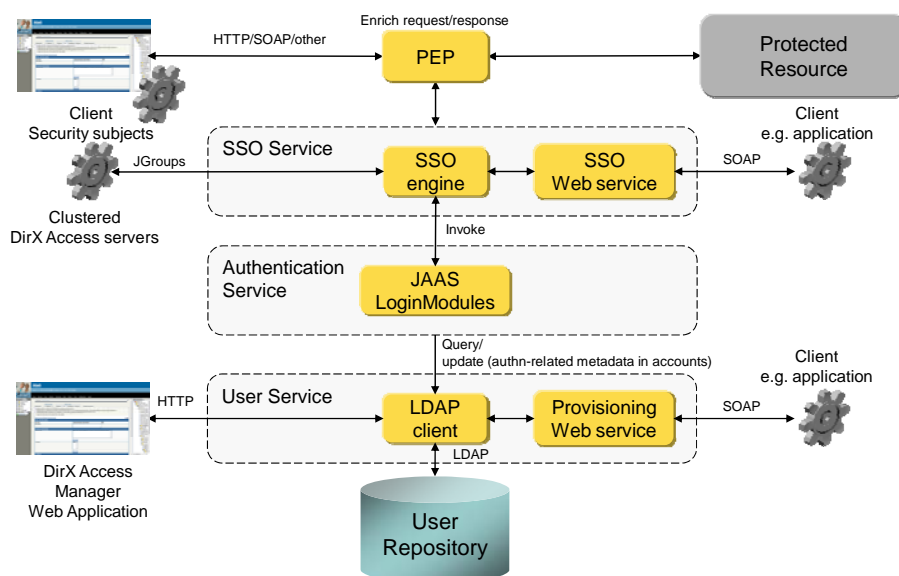


Figure 2: DirX Access Authentication/SSO Subsystem

thentication authorities and leverage the existing authentication infrastructure. Administrators can define the preferred authentication method to use for each distinct resource of Web and Web services applications or the DirX Access-protected resources of other applications. In this way, administrators can easily provide the most appropriate security level for each individual resource.

Administrators can use the DirX Access Server to assign a ranking to authentication methods. This ranking, provided by assurance levels, indicates how secure the authentication methods are relative to each other on a numeric scale. Assurance levels can be used as conditions for authorization. For example, a critical resource can be assigned a policy with an assurance level condition of 4, requiring that users be authenticated using only the most secure methods in order to achieve access. Assurance levels are defined in NIST Special Publication 800-63.

DirX Access provides step-up authentication to request a re-authentication using a stronger authentication mechanism when accessing a more critical resource.

DirX Access supports context-aware authentication based on internal vs. external IP address ranges to minimize risks. This mechanism allows different authentication methods to be applied to the different IP address ranges from which users access the services. For example, administrators can enforce stronger authentication for Internet accesses and weaker authentication for Intranet accesses.

### Single Sign-On and Session Management

Once successfully authenticated, users do not have to re-authenticate themselves when accessing other DirX Access-protected resources (unless a resource explicitly requires step-up authentication) on arbitrary servers within the same domain. The authentication state of users is securely exchanged via HTTP cookie headers or URI rewriting.

DirX Access manages security sessions by maintaining information on authenticated, assured user identities. This information comprises authentication method, authentication time, authentication credentials and other parameters specific to this login event. DirX Access provides an interface for plug-ins that fetch subject attributes from additional third-party sources and enrich the session information using these attributes.

In addition, environmental information can be handled in a configurable way in authenticated subject representations; for example, solution-specific security environments like information on network trust level and device types can be provided.

DirX Access creates a new security session for each successful login. A security session is established between Web browsers and a DirX Access Server using a session identifier that refers to the assured user identity information in the cache.

An existing security session is terminated by an explicit logout (initiated by the user), by session time-out, by idle time-out, or by shutdown of all DirX Access Servers in a cluster. In all cases, the assured user information in the cache is invalidated and can therefore no longer be referenced by Web browsers.

Additional DirX Access session management features include:

- ▶ SSO session augmentation: DirX Access allows third-party applications to enrich the SSO state maintained for authenticated users with arbitrary data (opaque to DirX Access). Such data can be queried, used in authorization decisions and included in SAML assertions and audit records.
- ▶ SSO event callout interface for third-party plug-ins: this feature allows notifying third-party applications of SSO events such as user logout, session time-out or idle time-out and is especially useful when third-party applications attach application-specific session information to the SSO state in DirX Access.
- ▶ SSO session correlation across multiple browsers: this feature allows matching and merging SSO state maintained for authenticated users based on criteria such as user identifiers and user origination (for example, requestor IP addresses). This feature is optional and allows assigning the very same SSO state in DirX Access to user sessions established through different frontends.

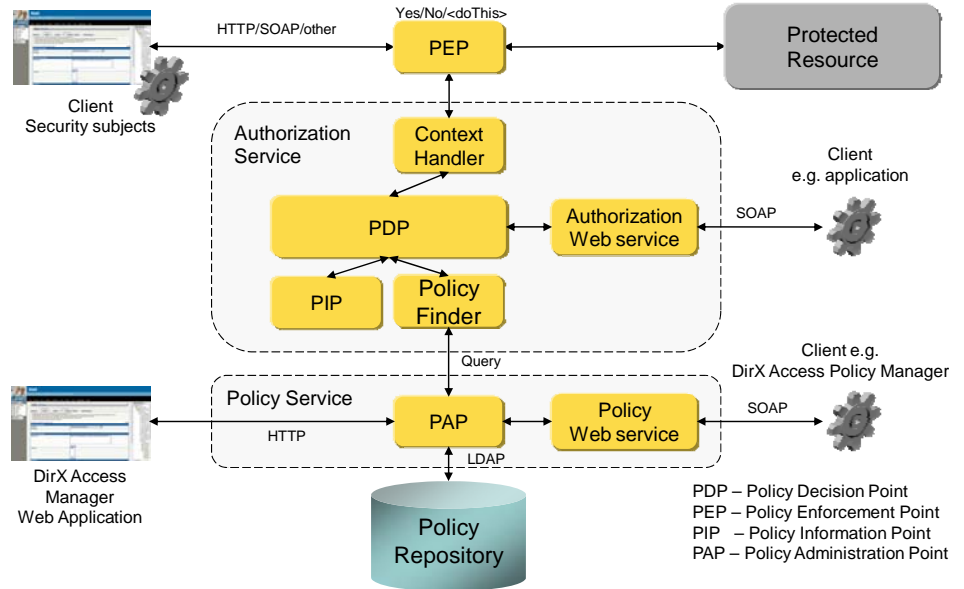


Figure 3: DirX Access XACML-based Authorization Subsystem

### Federated Authentication

Federated authentication is the process of transferring information regarding authentication state from an identity provider to a service provider in a different domain. DirX Access supports federated authentication according to SAML 2.0 and OAuth 2.0.

In contrast to the concept of initial authentication, federated authentication does not require that each user has a corresponding unique user account at the side of the service provider. Instead, the identity provider typically assigns roles to users and the service provider grants or denies access to a resource according to the roles from the security assertion statement. In this way, all information necessary to perform authentication (such as digital identity, authentication credentials, etc.) are managed locally at the identity provider but the final access decision remains in the sole responsibility of the service provider. SSO is also provided for federated authentication scenarios.

Authentication and SSO in DirX Access are delivered by the authentication/SSO subsystem as shown in figure 2.

### User Management

Initial authentication of users requires that identities are managed in an LDAP directory. This directory can be an externally managed directory with its own schema, for example, inetOrgPerson, or an LDAP directory under DirX Access administrative control, referred to as the DirX Access user repository.

In the first case, user management is performed using the corresponding external user inter-

faces and tools. DirX Access can use arbitrary LDAP attributes for its authentication and authorization needs.

When DirX Access performs its own user management, administrators can use DirX Access Manager to manage the user accounts; this tool provides an intuitive interface for user management and is described in more detail in the Administration section of this data sheet.

Once authenticated, the full user record/attributes can be used in federation or authorization scenarios (issuing SAML assertions, releasing OAuth user profile data, evaluating authorization policies, etc.) using user data from arbitrary LDAP repositories.

DirX Access provides just-in-time (JIT) provisioning for federated authentication. JIT provisioning can create user accounts in the DirX Access user repository on the fly at the service provider site based on the information in the SAML token.

DirX Access provides an SPML-based provisioning Web service for provisioning user accounts and their attributes in the DirX Access user repository. Both SPML V1.0 and V2.0 are supported.

For more complex tasks, such as assigning user attributes and privileges, integrating multiple directories, user databases, and application-specific repositories, it is recommended to use an identity management solution such as DirX Identity. DirX Identity also provides workflow-based user self-registration and self-management functionality as well as many other advanced identity management functionalities.

### Authorization and Entitlement Management

In DirX Access, authorization is provided as an external, centralized policy-based access control service that allows for the "up front" definition of a comprehensive set of access control policies and then grants or denies access to resources based on these policies.

Based on the XACML (eXtensible Access Control Markup Language) standard from OASIS (Organization for the Advancement of Structured Information Standards), access policies can be defined according to the authorization model that best suits the environment.

For example, a role-based access control (RBAC) model defines access policies based on the roles assigned to a user, while attribute-based access control (ABAC) defines access policies based on attribute values, and with discretionary access control (DAC) access policies are defined by the owner of an object. The owner decides who is allowed to access the object and what privileges they are granted.

Policy-driven authorization has many advantages. Access control policy definition and management is performed outside of the individual application and removes the need for individual application access control logic. It makes access policy creation an initial task rather than an ongoing one, simplifies the administration of access rights to multiple Web applications and resources, and provides for the consistent application of access rights and enforcement of security policies over time.

DirX Access uses XACML 1x/2.0 as the underlying authorization technology and supports the



following authorization models:

- ▶ Arbitrary, application-defined authorization models. Any authorization model that can be expressed as valid XACML objects can be used. The actual policy content is form-free as long as policy syntax requirements (well-formedness, validity) are met.
- ▶ An RBAC authorization model, allowing or denying access to Web services and Web application resources and the resources of other applications based on the role held by the requesting user within the organization. Administrators define the business roles used in the organization and specify the resources that should be available to each role based on business needs. This authorization model is constrained by the RBAC profile of XACML; the policies that can be expressed in this authorization model need to comply with this dedicated profile.

Authorization in DirX Access is delivered by the following building blocks (see Figure 3):

- ▶ PEPs (policy enforcement points), deployed as plug-ins to Web and Web application servers or other applications, process access requests, send authorization decision requests to PDPs and provide the authorization decision to their environment. Some PEPs enforce the PDP authorization decision themselves, while other PEPs just inform their environment about them.
- ▶ PDPs (policy decision points), provided as part of the DirX Access Server, render authorization decisions for access requests sent from PEPs. They base their decisions on authorization policies obtained from PAPs.
- ▶ PAPs (policy administration points) are authorization policy authorities that allow administrators to create, supply and maintain authorization policies. The PAP is represented by the policy service in a DirX Access Server. This service can be used via the DirX Access Manager, the DirX Access Provisioning Web service (authorization policies complying to the RBAC model), the DirX Access Policy Web services (other authorization policies) or via the DirX Access Policy Manager. Working with the PAP is subject to authorization and authentication through DirX Access.
- ▶ PIPs (policy information points) can be used to access information about the application environment that may be required in evaluating policy decisions. PIPs can also provide information on the subject or resource involved in the request.

DirX Access supports dynamic access control/authorization with the help of attribute finders, which provide the PDP with configurable information for access decisions. All information contained in the authenticated session (JAAS subjects) can be used; for example, the

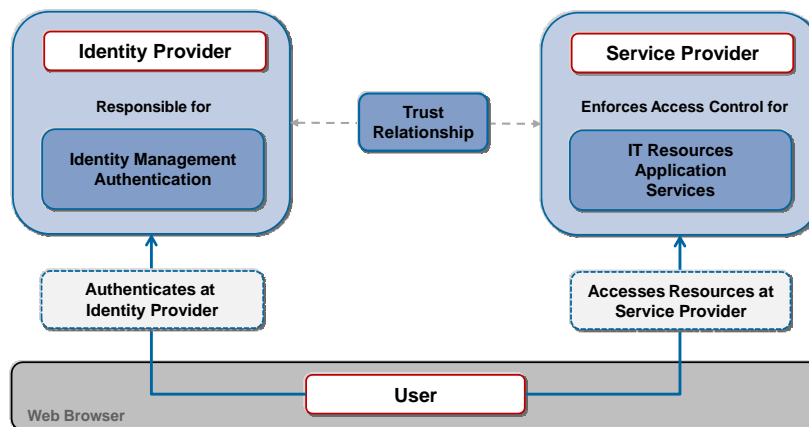


Figure 4: DirX Access Federation Model

user LDAP attributes, SAML assertion attributes, OAuth user profile data, application and environment-specific attributes passed by the PEP to the server (client device identification, application information), etc.

In addition, DirX Access reacts in real-time to modification of user records; for example, by revoking access when user attributes are changed.

## Policy Management

Policy management in DirX Access comprises functions to create, modify, delete and view authorization and authentication policies based on the XACML standard.

In DirX Access, administrative policies govern the administration of DirX Access, and business policies govern the access of users to the protected resources.

Authentication policies enforce the use of specific authentication methods for different system resources.

Authorization policies apply authorization rules controlling actions on protected resources. Fine-grained authorization policies help to define the level of granularity needed for authorization. They consider the properties of requested resources (such as security classifications) and requesting subjects (such as user names, group memberships or role assignments) to enable authorized access to resources and deny unauthorized access.

## Access Tester

Authorization policies can be tested from within the DirX Access Manager Tools section. The Access tester allows the administrator to simulate any user or role based access against the actual policy to see what will happen and if the configuration has the desired outcome.

## Identity Federation

Identity federation is a set of standards and technologies that allow partner organizations to establish trust relationships regarding each other's security policies and infrastructure, and then allow or deny access to resources based on this trust.

Identity federation enables for the secure sharing of digital identities and login sessions across security domains. It facilitates secure and seamless online collaboration by providing safe access to partner resources without the need for re-authentication, and permits partners to trust and share identity information for authentication and authorization without the need to create and maintain it at each partner site.

In DirX Access, identity federation extends the core services of authentication and authorization to the virtual enterprise. The identity federation model consists of a service provider (SP) (also called a resource provider), an identity provider (IdP), metadata that describes a partner site in a circle of trust, and a protocol for exchanging authentication and authorization data between security domains.

In a federated transaction, the identity provider is the "authentication authority" that performs authentication for service providers in the circle of trust, while the service provider is the "authorization authority" that owns the requested resource. A service provider relies on an identity provider's authentication and is responsible for authorizing the authenticated identity's access to the requested resource.

DirX Access supports both SAML-based and OAuth-based identity federation.

Identity federation can

- ▶ Cut the cost and complexity of online collaboration by eliminating the need for multiple user profiles.
- ▶ Deliver a positive user experience through cross-domain SSO.
- ▶ Improve productivity by providing secure,

convenient access to the resources of trusted partners.

- ▶ Interoperate with other standards-compliant federation solutions.

In identity federation scenarios, identity data comes in the form of transient authentication statements that are transferred in an interoperable and secure way. These authentication statements are also known as security tokens and come in the form of SAML assertions or as OAuth access tokens in DirX Access.

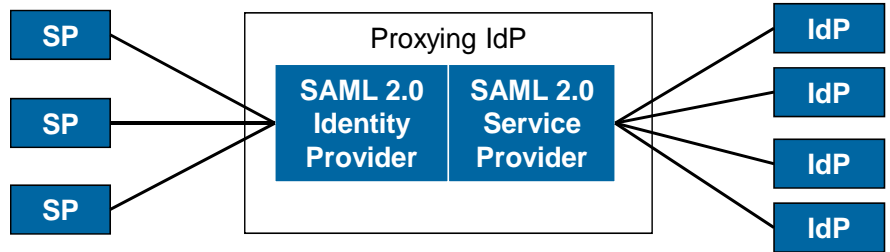


Figure 5: DirX Access Sample: Proxying IdP in a Hub/Spoke Scenario

### SAML-based Federation

In the case of SAML-based federation, DirX Access uses Security Assertion Markup Language (SAML) assertions to represent identities in federated transactions.

DirX Access supports both SAML 2.0 federation scenarios:

- ▶ Service provider-initiated: In this case, the user attempts to access a resource on a federated domain without first authenticating. The remote site then redirects the user to the identity provider for authentication. If authentication is completed successfully, the user is returned transparently to the destination site for authorization and, ultimately, for access to the desired resource.
- ▶ Identity provider-initiated: In this case, the user first authenticates in the local domain and then makes a request for a service or resource located on a federated domain.

In both scenarios, DirX Access can represent the identity provider that authenticates the user, or the service provider that owns the resource and relies on the source site's authentication.

DirX Access supports the following SAML 2.0 profiles, associated message protocol flows and bindings according to the SAML 2.0 conformance requirements document:

- ▶ Web Browser SSO profile with AuthnRequest message from SP to IdP via HTTP redirect or HTTP POST binding
- ▶ Web Browser SSO profile with IdP Response message to SP via HTTP POST or HTTP artifact binding including Unsolicited Responses (IdP first)
- ▶ Identity Provider Discovery profile with cookie setter and cookie getter messages via HTTP binding
- ▶ Single Logout profile with LogoutRequest and LogoutResponse messages via HTTP redirect, HTTP POST, HTTP artifact or SOAP binding
- ▶ Artifact Resolution profile with ArtifactResolve and ArtifactResponse message via SOAP binding
- ▶ Assertion Query/Request profile with authentication query, attribute query, authorization decision query and request for assertion by identifier messages via SOAP binding

- ▶ Basic Attribute profile
- ▶ X.500/LDAP Attribute profile
- ▶ UUID Attribute profile
- ▶ XACML Attribute profile

DirX Access supports the following SAML protocols:

- ▶ Authentication request protocol
- ▶ Artifact resolution protocol
- ▶ Single logout protocol
- ▶ Assertion Query and Request Protocol with authentication query, attribute query, authorization decision query and request for assertion by identifier elements

Request/response objects can be signed (enveloped XML signature).

DirX Access supports SAML assertions with the following contents:

- ▶ Authentication statements
- ▶ Attribute statements
- ▶ Authorization decision statements

Assertion objects and protocol objects can be signed (enveloped XML signature). SAML assertions, Namelds, and attributes can be encrypted.

DirX Access can include environmental information - for example, solution-specific security environments like information on network trust level and device types - into the SAML assertions.

DirX Access supports SAML metadata import and export, which addresses the mutual configuration that needs to be established between an identity provider and a service provider.

### SAML Proxying

DirX Access supports SAML proxying based on the SAML 2.0 specification. In SAML proxying, identity providers can proxy an authentication request from a service provider to a different identity provider that has already authenticated the user or is capable of authenticating the user, enabling the delegation of initial user authentication in SAML Web SSO federation from a local

SAML identity provider endpoint to external SAML identity provider endpoints.

A proxying identity provider is a combination of a traditional SAML authentication identity provider (implementing SAML SingleSignOnService in particular) and a traditional service provider (implementing SAML AssertionConsumerService).

With SAML proxying:

- ▶ Multiple proxying identity providers can be configured between the service provider and the actual identity provider.
- ▶ A proxying identity provider can be configured to connect to multiple identity providers and/or to multiple service providers. In this configuration, the proxying identity provider serves as a hub/bridge/gateway in a hub and spoke identity federation model, allowing for easier management of configuring trust for a large number of identity providers and service providers in a federation scenario.

### Just-in-Time Provisioning

DirX Access provides a dynamic user provisioning model for SAML-based federation environments known as just-in-time (JIT) provisioning. It is targeted at (cloud) federation scenarios, where (cloud) service providers require identity data from an identity provider as a prerequisite for authorizing access to their (cloud) services. Just-in-time provisioning is primarily a service provider-side solution. It enables a service provider to create user accounts on the fly the first time the user successfully authenticates via SAML Web SSO federation protocol with a SAML assertion issued by a trusted identity provider. It uses the attributes of incoming SAML assertions issued by a trusted identity provider to create and update user accounts in the destination application directory. Just-in-time provisioning is useful for cases where the user's identity does not need to be known in advance by the service provider, such as supply chain portals, collaborative projects and many SaaS applications.

DirX Access supports both push- and pull-based JIT provisioning scenarios:

- ▶ In the push model, the service provider cre-

ates user accounts using the identity data of the incoming SAML assertion. The DirX Access identity provider FEP supports a SAML-based, push-based JIT provisioning scenario with its own DirX Access user repository and with any SAML SP that supports JIT provisioning, for example Salesforce.com.

- In the pull model, the cloud service provider decides when and how to pull identity data from the identity provider originating the SAML assertion. The service provider first asks the identity provider for the required identity data and then creates the user account based on a union of identity data contained in the SAML assertion and received in the response to the additional requests.

### Proven SAML 2.0 Interoperability

DirX Access passed Liberty Alliance SAML 2.0 interoperability testing in 2009. DirX Access participated in the third Liberty Interoperable™ full-matrix testing event for SAML 2.0 together with eight other products from different vendors and demonstrated that DirX Access fulfills the stringent test criteria for open, secure and privacy-respecting federated identity management.

### Identity Federation and Cloud Computing

DirX Access provides SSO for cloud-based applications or for SaaS to secure access in a cost-efficient and reliable manner. Federation standards such as SAML are being used for authentication of users to off-premise applications (SaaS or cloud-hosted).

### Preconfigured SAML Service Providers

DirX Access supports preconfigured SAML service providers. This functionality allows administrators to easily establish SAML-based interoperability between the DirX Access identity provider and well-known cloud service providers such as Google Apps, Citrix ShareFile, Microsoft Office 365 and Salesforce.com with out-of-the-box configurations delivered with DirX Access. It also allows for parameterizing provider instances and creating custom templates for other preconfigured service providers and identity providers.

### OAuth-based Federation

DirX Access also supports the OAuth 2.0 standard for authorization in identity federation scenarios. OAuth defines a resource authorization protocol that allows resource owners to delegate resource access rights. This enables sharing resources across organizational boundaries without sharing user credentials. To support this use case, DirX Access provides both OAuth client functionality and OAuth authorization server functionality. DirX Access can be configured independently

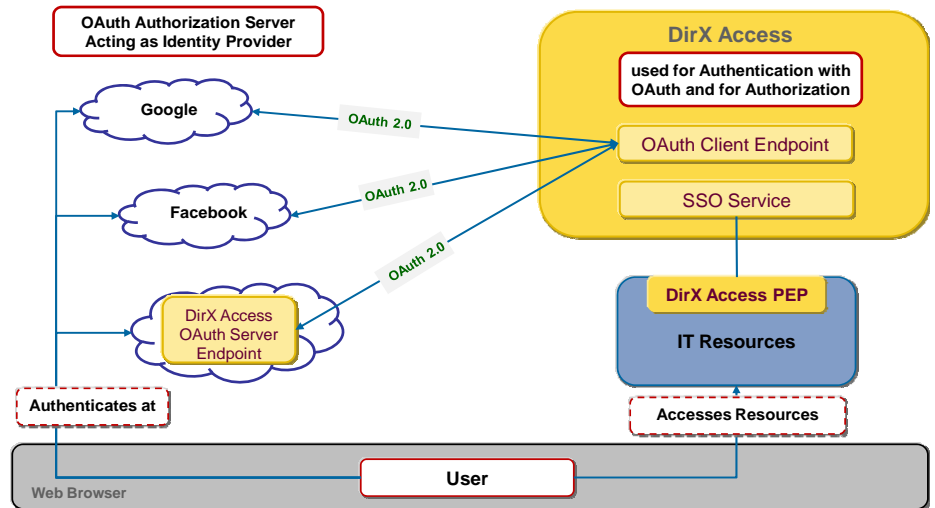


Figure 6: OAuth-based SSO with Social Identities

or in conjunction with browser-based SSO for either an IdP or an SP deployment:

- In an SP deployment, the OAuth client federation endpoint client requests and uses the access token to access the protected resources
- In an IdP deployment, the OAuth server federation endpoint can be used to authenticate and provide the access token with associated user information.

Figure 6 shows an OAuth-based single sign-on scenario where users authenticate with their social identities from systems such as Google, Facebook, etc. to access IT resources that are protected by DirX Access. In this scenario DirX Access is used for authentication via OAuth and for authorizing access the IT resources in an SP deployment.

## Securing Web Applications

Access management solutions were initially focused on securing access to Web applications and Web content behind eBusiness, eGovernment, and eShop portals. To this end, DirX Access WAM capabilities apply the concepts of external, central, policy-based authentication and authorization services, identity federation and SSO to provide secure, convenient, and reliable access to multiple Web applications with one authentication step.

The DirX Access PEPs that secure Web applications can be classified as protocol stack extension PEPs, container PEPs, and application PEPs. In addition, custom PEPs can be created based on the client SDK or by the DirX Access Web services.

Protocol stack extension PEPs reside in protocol stacks. The most common examples are the HTTP stack PEPs (Web PEPs) like the ones for Apache Web Server, Apache Tomcat or Micro-

soft Internet Information Server. They integrate with the down-stream applications that they protect mainly through header injection. Via header injection, data from various sources can be made available to applications, e.g. user- and session-related data as well as data from arbitrary LDAP repositories.

DirX Access provides container PEPs for Java-based application servers like JBoss Application Server, SAP NetWeaver, Oracle/BEA WebLogic and IBM WebSphere. They protect J2EE applications (servlets, JSP, JSFs, EJB, and others) deployed in these servers via the standard J2EE interfaces JAAS and JACC.

The DirX Access PEP and the IBM WebSphere application server - through its LTPA token - also allow for the further integration and single sign-on of the Lotus Notes/Domino Web access (iNotes).

Application PEPs can be provided for applications that support standard or published interfaces. One important example is servlet applications, which can be protected individually by the DirX Access servlet filter PEP. Applications that do not provide such integration points can be protected with a custom-developed PEP built with the DirX Access Client SDK.

## Securing Web Services

With the advent of Web services-based SOAs, WAM solutions must move beyond securing traditional Web applications. Consequently, DirX Access also provides authentication and authorization services that secure access to Web content published by Web services providers and requested by Web services clients using messaging protocols like SOAP over HTTP or HTTP over SSL/TLS, both within and across security domains.

DirX Access supports the relevant standards for implementing security for Web Services. The

OASIS WS-Security and SAML assertion security token standards facilitate Web services authentication, authorization, and SSO between Web service providers and clients, while the OASIS WS-Trust standard can be used to implement identity federation, including cross-domain SSO in Web services-based SOAs.

DirX Access provides SOAP stack PEPs (Web Services PEPs) for both JAX-WS (the Java API for XML Web Services) and WCF (Windows Communication Foundation), which extend these SOAP protocol stacks in order to secure Web Services.

## Securing Legacy Applications

The demand for online collaboration, increased operational efficiency and 24/7 access to business resources is driving companies to bring their legacy applications online at a rapid pace. DirX Access offers a way to secure these legacy applications with the same external, centralized, policy-based authentication and authorization services used for modern Web applications.

DirX Access supports application PEPs that integrate with specific applications and protect them. Depending on the integration mechanism, they can be classified as:

- ▶ Application source PEPs, which are custom PEPs that use Client SDK methods integrated into the sources of the application.
- ▶ Application extension PEPs, which are custom or off-the-shelf PEPs that extend applications; for example, aspect-oriented programming (AOP)-based PEPs.

Legacy applications can use PEPs and PDPs as their access management system, providing an external, centralized method for controlling access to these applications rather than having to build in access management security on an application-by-application basis.

## Security Web Services

The problem of externalizing and centralizing application-specific security also applies to Web services-based SOAs. When migrating applications to run as discrete Web services, how do you handle the individual (and usually unique) security logic and data that is present in each application?

DirX Access responds to this challenge by providing its security features as out-of-the box Web services for deployment in Web services-based SOAs. Businesses can then add security logic as well-defined, published Web services for use by any business process service running in a Web services based SOA.

DirX Access provides the following off-the-shelf Web services:

- ▶ The Authentication and SSO Web service,

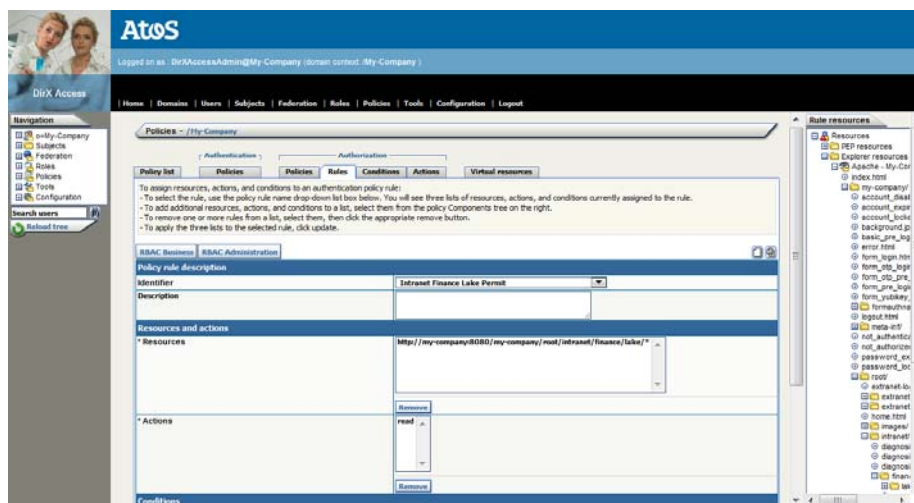


Figure 7: DirX Access Manager GUI Sample

which provides authentication and SSO functionality.

- ▶ The Authorization Web service, which provides authorization decision-making and testing based on the OASIS XACML standard.
- ▶ The Policy Web service, which provides authorization policy querying and management based on the OASIS XACML standard.
- ▶ The Federation Web service, which provides SAML assertion issuance and an OASIS WS-Trust security token service (STS).
- ▶ The Provisioning Web service, which provides the ability to provision DirX Access with users, groups and organizational units, and to control the assignment of those objects to roles. It is based on the OASIS SPML V1.0 and V2.0 standards.
- ▶ The Configuration Web service, which is used to configure the DirX Access system.

## Administration

Administrative responsibilities reflect business structures so that companies can place the management of users, groups, and policies for access to resources with someone close to the demands of a particular business line. DirX Access provides methods for flexible, secure delegation of administrative responsibilities to respond to temporary changes in personnel and shifts in organizations and processes and support the business-agile enterprise. DirX Access provides Web-based administration tools that permit administrative activities to run in parallel for fast, efficient deployment of access policies across the virtual enterprise. DirX Access provides graphical resource explorers that offer easy, effective discovery and registration of resources in the virtual enterprise. If there is a need for more complex identity management and provisioning activities, DirX Ac-

cess can be seamlessly integrated with DirX Identity or cooperate with other identity management solutions.

Access control for administration uses the same authentication and authorization mechanisms as access control for protected organizational resources.

DirX Access administration is performed through the DirX Access Manager (see figure 7), a Web-based administration tool that allows administrators to perform a variety of tasks, such as:

- ▶ Creating business roles.
- ▶ Defining users, groups and organizational units that require access to protected resources, and importing existing users from external repositories.
- ▶ Creating authentication policies using a resource tree.
- ▶ Creating authorization rules and policies using a resource tree.
- ▶ Setting authorization conditions, such as the time of day, authentication method, assurance level, or the IP range required for access.
- ▶ Assigning policies to roles.
- ▶ Assigning users, groups and organizational units to roles.
- ▶ Configuring the internal representation of authenticated subjects.
- ▶ Configuring the SAML assertions of authenticated subjects.
- ▶ Configuring federation.
- ▶ Configuring servers.
- ▶ Configuring PDPs.
- ▶ Configuring PEPs and resource explorers.

To define and enforce access effectively, DirX Access must be aware of resources on the



network.

Resource explorers are administrative utilities that scan the Web and application servers, on which they are deployed, listing available resources such as Web pages, servlets, beans and bean methods. If resources are discovered by explorer agents, they are added to the hierarchical resource tree in the Web-based DirX Access Manager. This automatic discovery reduces manual data input, saving time and improving accuracy.

Additional administrative applications provided by DirX Access include:

- ▶ **Deployment Manager**, a command-line based standalone Java application plus optional Web GUI for the initial setup and basic configuration of DirX Access product deliverables.
- ▶ **Policy Manager**, a Java Swing GUI-based application to edit XACML policies and employ the DirX Access Policy and Authorization Web services.

### Multi-Tenancy

To support multi-tenancy, multiple tenant-specific instances of DirX Access can be deployed providing own tenant-specific configuration for each tenant. This allows serving multiple client organizations (tenants) with one single installation of the software.

## Audit (Knowing What Was Done and Being Able to Prove It)

In order to prove compliance with an increasing number and complexity of business and privacy regulations, the DirX Access Audit service provides complete transaction accountability across the virtual enterprise. The system:

- ▶ Audits transactions both within and across security domains.
- ▶ Logs all security events for proof of activity; for example, the result of authentication and authorization requests or password and policy changes.

All authorization requests for a given transaction can be correlated to previous authentication events; therefore all transactions can be traced back to their origins. This design applies to all relevant system features (authorization, authentication, identity federation, user management, policy and configuration management).

Audit data generated by the DirX Access audit service corresponds directly to the actions of identifiable and authenticated users. Actions recorded for each user include:

- ▶ Authentication: (who, when, how)
- ▶ Authorization (who, when, for what)
- ▶ Session management (for example, session lifetime, idle timeout)

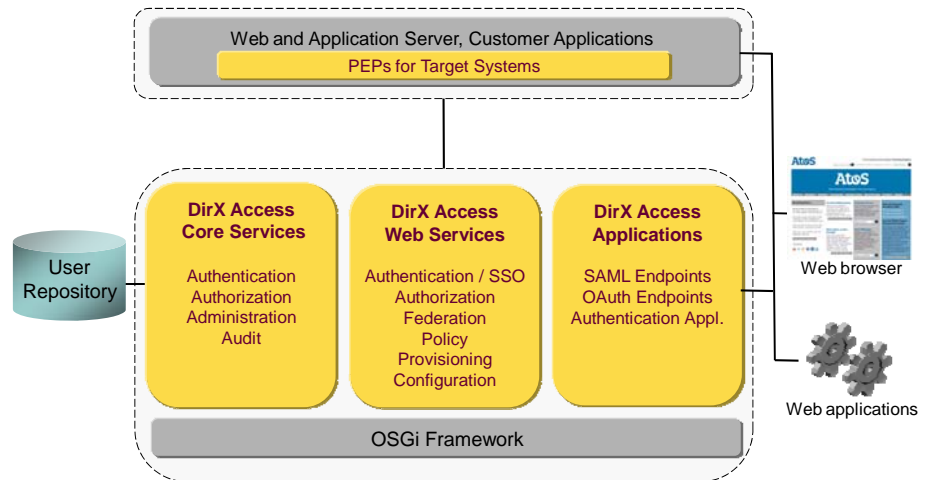


Figure 8: DirX Access Architecture and Integration into Applications

- ▶ Account and password management (for example, changes, expiration time reached)
- ▶ Policy management (for example, role, authentication and authorization policy creation and modification)
- ▶ User management (for example, user and group creation and modification)
- ▶ Configuration events

DirX Access provides an audit externalization interface that supports custom implementations of audit events processing via plug-ins. The following implementations are provided with the product:

- ▶ An implementation based on Log4J which uses Log4J appenders (for example, for console, file, database, syslog, and other items) to process DirX Access audit events. This is the default audit plug-in provided by DirX Access.
- ▶ Out-of-the-box integration to the DirX Audit product.

DirX Audit can be used for centralized, secure storage, analysis, correlation and review of identity- and access-related audit logs and for creating reports. DirX Audit is part of the DirX product suite and can be ordered separately. DirX Access provides for the export of its deployment, configuration, policies and user data as XML files through various Web services. This feature can be customized and transformed, for example, by XSLT to custom reports.

## Logging

DirX Access logging records internal system operations for problem diagnostics and debugging. The amount of information each server generates can be controlled by restricting its logs to a given level.

## Integration and Customization Framework

DirX Access functions and components are designed for integration into customer environments as described in previous sections. Comprehensive configuration capabilities provide extensive customization options that allow for easy adaptation to customer deployments.

## DirX Access Architecture

Many third-party business applications in the enterprise can use DirX Access for access management and enforcement; for example, portals, Web servers, application servers, and other applications. They can be broadly structured according to the Client, Web, Application, and Data tier. DirX Access typically integrates into the Web and Application tiers. Depending on the technology of these integration tiers, one may use DirX Access off-the-shelf capabilities (PEPs, explorers and federation endpoints) or the DirX Access Client SDK to integrate other applications such as legacy systems.

DirX Access integrates with the applications it protects through capturing agents (referred to as PEPs - policy enforcement points) deployed as plug-ins to Web and Web application servers or other applications. They act as DirX Access Server clients, mediating the authentication and authorization process, enforcing the access decisions of the server and providing the user browser and the downstream applications with session and state information. This setup also includes reverse-proxy configurations.

The DirX Access Server provides the core security services—authentication, authorization (PDP - policy decision point), SSO, federation, policy, configuration and others—to the PEPs, mediates the access to the LDAP repositories, exposes the services as Web services and/or

federation services to third-parties and provides the Web-tier logic for the Web-based management interfaces.

The PDP access decisions are driven by the XACML-based authorization policies, which are managed by the policy administration point (PAP). The PAP is implemented by the policy service in the server and is also provided as a Web service. It can be used through a Web-based GUI provided with the DirX Access Manager (specializing on RBAC) as well as the DirX Access Policy Manager (specializing on ABAC).

The policy information points (PIPs) are used to access information about the application environment or on the subject or resource involved in the request.

DirX Access uses LDAP directory servers to store user, configuration and policy data.

The DirX Access architecture can be structured in tiers as follows:

► Client tier:

- DirX Access PEPs and explorers
- DirX Access applications such as federation endpoints, Authentication Application, DirX Access Manager, and Web services

► Server tier: DirX Access Servers providing security services

► Data tier: Directory servers used to store user, configuration and policy data for DirX Access.

DirX Access services and applications are uniformly deployed in ready-to-use OSGi-based containers. This configuration allows for network separation when deploying services in a protected network and applications in a DMZ.

Figure 8 presents the DirX Access architecture and its integration points in existing applications from a high-level component perspective.

## Client Tier: DirX Access Policy Enforcement Points and Explorers

PEPs are plug-in components that operate as a DirX Access client and that provide policy enforcement services (especially authorization and authentication). They process requests for resources and services, query the DirX Access Server for authorization and authentication, and provide the decisions back to their environment.

Resource explorers are optional components that help in authoring authorization policies (see their description under the Administration section of this document).

For integration purposes, DirX Access also supports the configuration of arbitrary LDAP user objects that are injected into the HTTP header for further use of the secured application.

## Client Tier: DirX Access Applications

DirX Access provides the following categories of off-the-shelf Web applications: DirX Access Manager, DirX Access Authentication Application and federation applications.

DirX Access Manager provides an intuitive Web-based interface that allows full or delegated administrators to manage the system (for details, see the Administration section of this document).

DirX Access Authentication Application is a DirX Access component that performs initial user authentication on behalf of DirX Access PEP and FEP components. The layout of the user interface is customizable. The Authentication Application allows for context-aware authentication based on internal vs. external IP address ranges to minimize risks.

DirX Access federation applications provide endpoints for federated identity management:

- The SAML service provider federation endpoint (SP FEP) provides a federation endpoint for SAML service providers
- The SAML identity provider federation endpoint (IdP FEP) provides a federation endpoint for SAML identity providers.
- The SAML identity provider federation endpoint supports SuisseID and the SAML service provider federation endpoint provides support for SuisseID-enabled identity providers. SuisseID is a national ID infrastructure project in Switzerland. SuisseID follows a user-centric identity management approach and extends the SAML 2.0 specification by user-centric identity management features.
- The OAuth server federation endpoint represents the authorization server side of the OAuth communication. An authorization endpoint is used by the client to obtain authorization from the resource owner via user-agent redirection. A token endpoint is used by the client to exchange an authorization grant for an access token, typically with client authentication.
- The OAuth client federation endpoint represents the client side of the OAuth communication and is able to create a session in DirX Access. The OAuth client federation endpoint works with any OAuth 2.0 server such as Google, Facebook, etc.

## DirX Access Web Services

DirX Access provides the following off-the-shelf Web services:

- Authentication and SSO Web service
- Authorization Web service
- Policy Web service
- Federation Web service
- Provisioning Web service

► Configuration Web service

For details, see the Security Web Services section in this document.

## Server Tier: DirX Access Core Services

The DirX Access services provide the core functionality of the product, including authentication and SSO, authorization, administration and audit services. This functionality is realized using SOA principles and consists of core and supporting services.

The DirX Access Server services are used by native communications as well as through bundled Web applications and Web services.

## Data Tier: Directory Server

DirX Access can use two different LDAP directory servers in parallel, one for user and one for policy/configuration data.

Any standard LDAP directory with a schema suitable for user management (for example, InetOrgPerson object class) can serve as a user repository.

DirX Access can supplement the user record obtained from the user directory with information from other stores using standard and/or custom-build attribute finders, which are functionally comparable with virtual directories.

Policy data includes the following elements:

- Authentication policies
- Authorization policies (RBAC/ABAC), including rule, condition and action components

Configuration data includes the following elements:

- Authentication methods
- Server configurations
- Policy enforcement point configurations
- Federation endpoint configurations
- Centralized component configuration parameters such as user directory settings, templates to construct or interpret SAML assertions and other parameters

User management applications can be integrated with the DirX Access Server via its provisioning interface.

DirX Access can also use various LDAP servers that are not part of the DirX Access product delivery.

## Reliability, High Availability and Scalability

To achieve maximum availability and failover security as well as scalability, multiple, redundant DirX Access Servers can be configured. DirX Access clients, for example, PEPs or federation endpoints, can perform load-balanced

access to the servers. Therefore, the DirX Access clients keep an internal connection pool and a health index of the multiple servers. Load balancing is then handled internally using that connection pool. To complete the fail-safe setup, the DirX Access Server supports primary and secondary directory configuration for failover deployments.

DirX Access uses a set of sophisticated mechanisms to recover from network component failures and prevent down time for users, including:

- ▶ A distributed cache, allowing multiple DirX Access Servers to share security objects and configurations.
- ▶ Load balancing between DirX Access Servers based on a round-robin scheduling algorithm and server stickiness.
- ▶ A state-of-the-art operation recovery process using retries, retry intervals and error thresholds.

### Client Behavior

Every application acting as a DirX Access client in the system is expected to have a corresponding entry in the DirX Access configuration store. When a DirX Access client initiates communication with a DirX Access Server, it must provide an instance name. The configuration service uses this instance name to determine the appropriate configuration entry in the configuration store. This includes the addresses of all DirX Access Servers in a network or a dedicated subset of these servers associated with this client in a specific way (along with more information, such as the maximum number of connections this client may initiate).

When an application sends requests to DirX Access Servers, the underlying DirX Access client transparently performs load-balancing over the configured DirX Access Servers. It also automatically creates server connections as required to process its message traffic, up to its configured maximum. When this threshold is reached, the DirX Access client continues to process its message traffic using the available servers and connections.

### Session State Sharing

Multiple DirX Access Servers in a network share a synchronized cache containing session objects, policies, and configuration attributes. The shared cache allows clients (PEPs, FEPs) to send requests to arbitrary servers in a network and also improves performance by reducing the number of read requests to the directory server.

This cache also enhances reliability and failover mechanisms, since a session object created by one server and stored in the policy cache can be reused by any other server. Whenever one server fails, the other servers can transparently

pick up the session without compromising the security of the transaction.

Whenever a user authenticates successfully, a new session is initiated, which creates a new subject in the cache system. The subject contains the session token as a principal, along with the list of attributes associated with the authenticated user (for example, role assignments) and additional information. Since the cache is distributed, session states are immediately made available to all other servers. There is no concept of object ownership among DirX Access Servers. If for any reason a server goes down or becomes inaccessible, the load is transparently redistributed over the remaining servers.

### LDAP Failover

Access to the LDAP directory configuration/policy and user repository is crucial for DirX Access and is ensured by switching to a secondary directory server instance if the primary server is unavailable. If a DirX Access Server receives a timeout in response to any directory operation, it will try using the secondary instance instead.

## Supported Standards

DirX Access supports the relevant standards, protocols, and security frameworks to provide its security functionality and services:

For authorization and privacy, DirX Access supports XACML 1.x/2.0, SAML 1.x/2.0, OAuth 2.0 and RBAC.

DirX Access successfully passed the Liberty Alliance SAML 2.0 interoperability test in 2009 when it participated in the third Liberty Interoperable™ full-matrix testing event for SAML 2.0.

For initial user authentication in Web environments, DirX Access supports SSL/TLS, HTTP Basic, HTML Form-based authentication with username/password and one-time-passwords based on IETF RFCs 2289, 4226 and 6238.

For initial user authentication in Web services environments, DirX Access supports UsernameToken and X509Token.

For intra-domain SSO in Web environments, DirX Access supports Integrated Windows Authentication (SPNEGO/ Kerberos, NTLM), authenticated subject identifiers transferred via HTTP cookie headers, and URL rewriting.

For cross-domain SSO and identity federation in Web environments, DirX Access supports SAML 1.x/2.0 especially SAML Web-SSO profiles and OAuth 2.0.

For cross-domain SSO and identity federation in Web services environments, DirX Access supports WS-Trust.

For secure communication, DirX Access supports SSL/TLS and WS-\* security.

For object security, DirX Access supports XML signature.

For key management, DirX Access supports PKCS and X.509/PKIX.

For communications, DirX Access supports HTTP, SOAP and WS\*.

For persistence and provisioning, DirX Access supports LDAP, DSML and SPML.

In Java environments, DirX Access supports JAAS, JACC, JCA/JCE, JGSS, and JSSE.

DirX Access supports both IPv4 and IPv6 Internet Protocol.

## Other DirX Products

The following products also belong to the DirX product suite and can be ordered separately; DirX provides the basis for totally integrated identity and access management:

**DirX Directory**, the leading LDAP/ X.500 directory server, is the foundation for identity management.

**DirX Identity** provides a comprehensive, process-driven, customizable, cloud-ready, scalable and highly-available identity management solution for enterprises and organizations. It delivers overall identity and access governance functionality seamlessly integrated with automated provisioning. Features include life-cycle management for users and roles, cross-platform and rule-based provisioning in real time, Web-based user self-service and delegated administration, request workflows, access certification, password management, metadirectory and auditing and reporting.

**DirX Audit** provides auditors, security compliance officers and audit administrators with analytical insight and transparency in the identity and access management processes. A dashboard visualizes key performance indicators, statistics and metrics and allows drill-down into the details of individual events. Filtering, analyzing, correlating and review of identity-related events allow answering the "what, when, where, who and why" questions of user access and entitlements.

## System Requirements for DirX Access V8.3

### Supported Policy Enforcement Points/Resource Explorer and Client SDK:

The following combinations are supported. Other PEPs may be available on request.

	Microsoft Windows Server 2008 R2, 2012, 2012 R2	Oracle Solaris 11 (Sparc)	Red Hat Enterprise Linux 6	SUSE Linux Enterprise Server 11
<b>Web Server PEPs and Explorers</b>				
Apache httpd 2.2	Yes <sup>3)</sup>	Yes <sup>1)</sup>	Yes <sup>1)</sup>	Yes <sup>1)</sup>
Apache httpd 2.4	Yes <sup>4)</sup>	Yes <sup>4)</sup>	Yes <sup>4)</sup>	Yes <sup>4)</sup>
Reverse proxy (based on Apache httpd 2.2)	Yes <sup>3)</sup>	Yes <sup>1)</sup>	Yes <sup>1)</sup>	Yes <sup>1)</sup>
Apache Tomcat 6.0/7.0/8.0	Yes <sup>5)</sup>	Yes <sup>5)</sup>	Yes <sup>5)</sup>	Yes <sup>5)</sup>
Microsoft IIS 7.0/7.5/8.0/8.5	Yes <sup>2)</sup>	-	-	-
<b>Application Server PEPs</b>				
JBoss Application Server 5.1.0GA	Yes	Yes	Yes	Yes
SAP NetWeaver 7.0	Yes	Yes	Yes	Yes
Oracle/BEA Weblogic 10.3.2	Yes	Yes	Yes	Yes
IBM WebSphere 6.1	Yes	Yes	Yes	Yes
<b>Servlet and Application-specific PEPs</b>				
Servlet filter e.g. Tomcat, Jetty, etc.	Yes	Yes	Yes	Yes
<b>SOAP PEPs</b>				
JAX-WS	Yes	Yes	Yes	Yes
Microsoft WCF	Yes	-	-	-
<b>Client SDK support (Legacy application PEPs and Explorers)</b>				
DirX Access Client SDK for Java 1.5 or higher (with samples for AOP PEPs and Tomcat Servlet container PEP)	Yes	Yes	Yes	Yes

<sup>1)</sup> Available as 32- and 64-bit PEP

<sup>2)</sup> Available as 32- and 64-bit PEP for Windows Server 2008/IIS 7.0, as 64-bit PEP for Windows Server 2008 R2/IIS 7.5, Windows Server 2012/IIS 8.0, Windows Server 2012 R2/IIS 8.5

<sup>3)</sup> Available as 32-bit PEP

<sup>4)</sup> Available as 64-bit PEP

<sup>5)</sup> Apache Tomcat 7.0 and 8.0 are supported via servlet filter PEP



# System Requirements for DirX Access V8.3

## Hardware

- ▶ Intel server platform for Microsoft Windows Server 2008 R2, Microsoft Windows Server 2012, Microsoft Windows Server 2012 R2, Linux
- ▶ Fujitsu PRIMEPOWER Sparc
- ▶ Sparc processors for Oracle Solaris

### Memory Requirements:

Main memory:	minimum 2 GB
Disk Space:	minimum 1 GB plus disk space for data

## Software

### DirX Access Server Support

DirX Access Server as a Java application is supported on the following platforms with latest patches/service packs for the selected platform:

- ▶ Microsoft Windows Server 2008 R2 (x86-64)
- ▶ Microsoft Windows Server 2012 (x86-64)
- ▶ Microsoft Windows Server 2012 R2 (x86-64)
- ▶ Oracle Solaris 11 (Sparc)
- ▶ Red Hat Enterprise Linux 6 AP (x86-64)
- ▶ SUSE Linux Enterprise Server 11 (x86-64)

### Virtual Machine Support:

VMWare ESXi 5.1, in combination with guest operating systems listed above that are supported by VMWare ESXi 5.1

### Supported LDAP Directories for Configuration/Policy Data:

DirX Access supports the following LDAP directories (others on request):

- ▶ DirX Directory V8.1/V8.2
- ▶ OpenDJ 2.5
- ▶ Windows Server 2008/2012/2012 R2 Active Directory / Active Directory Lightweight Directory Services (AD LDS)

### Supported Directories for User Data:

Arbitrary LDAPv3-compliant directory servers with user accounts based on the InetOrgPerson object class

### Browser Support for the DirX Access Manager and Deployment Manager

- ▶ Microsoft Internet Explorer 8 or newer
- ▶ Firefox 17 or newer

### Supported PEPs, Explorers and Application Servers:

These components are listed on the previous page.

## User interface

English

## Documentation

- ▶ Release Notes (Textfile, English)
- ▶ Installation Guide (Manual, English)
- ▶ Administration Guide (Manual, English)
- ▶ Migration Guide (Manual, English)
- ▶ Integration Guide (Manual, English)
- ▶ Web Sample Scenario Guide (Manual, English)
- ▶ Web Services Sample Scenario Guide (Manual, English)
- ▶ Client SDK Documentation (JavaDoc, English)

---

# About Atos

Atos SE (Societas Europaea) is an international information technology services company with annual 2012 revenue of EUR 8.8 billion and 77,000 employees in 47 countries. Serving a global client base, it delivers IT services in 3 domains, Consulting & Technology Services, Systems Integration and Managed Services & BPO, and transactional services through Worldline. With its deep technology expertise and industry knowledge, it works with clients across the following market sectors: Manufacturing, Retail & Services; Public sector, Healthcare & Transport; Financial Services; Telecoms, Media & Technology; Energy & Utilities.

Atos is focused on business technology that powers progress and helps organizations to create their firm of the future. It is the Worldwide Information Technology Partner for the Olympic and Paralympic Games and is quoted on the NYSE Euronext Paris market. Atos operates under the brands Atos, Atos Consulting & Technology Services, Worldline and Atos Worldgrid.

## Legal remarks

On account of certain regional limitations of sales rights and service availability, we cannot guarantee that all products included in this document are available through the Atos sales organization worldwide. Availability and packaging may vary by country and is subject to change without prior notice. Some/All of the features and products described herein may not be available in the United States or Japan.

The information in this document contains general technical descriptions of specifications and options as well as standard and optional features which do not always have to be present in individual cases. Atos reserves the right to modify the design, packaging, specifications and options described herein without prior notice. Please contact your local Atos sales representative for the most current information.

Note: Any technical data contained in this document may vary within defined tolerances. Original images always lose a certain amount of detail when reproduced.

For more information, contact: [security@atos.net](mailto:security@atos.net)

[atos.net/identity](http://atos.net/identity)

Atos, the Atos logo, Atos Consulting, Atos Sphere, Atos Cloud, Atos Worldgrid and Worldline are registered trademarks of Atos SE. All trademarks are the property of their respective owners. December 2013© 2013 Atos.